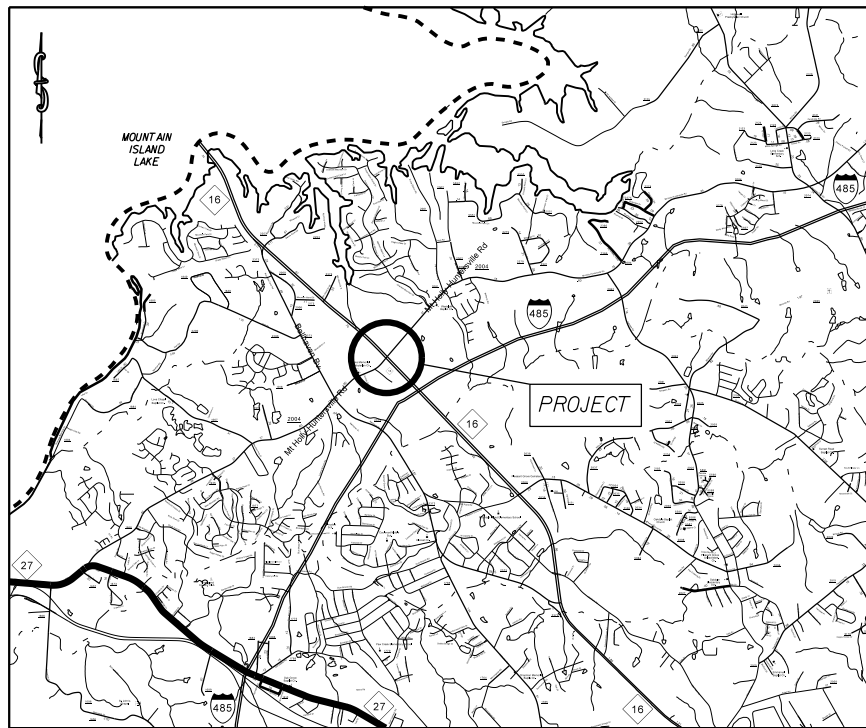


PROJECT: 43957 TIP:

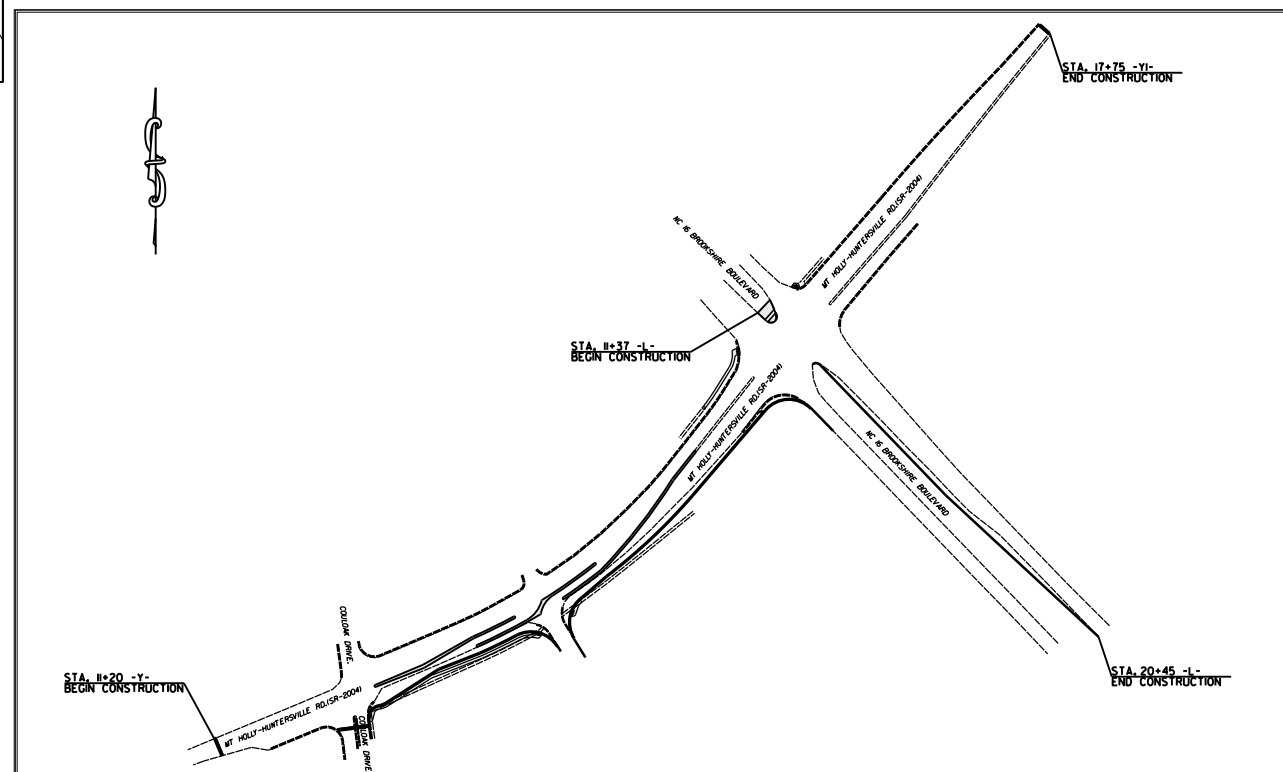


VICINITY MAP NOT TO SCALE

STATE OF NORTH CAROLINA
DIVISION OF HIGHWAYS
MECKLENBURG COUNTY

LOCATION: INTERSECTION OF NC 16 BROOKSHIRE BOULEVARD AND
MT HOLLY-HUNTERSVILLE RD. (SR-2004)

TYPE OF WORK: GRADING, PAVING, MILLING, CONCRETE CURB AND GUTTER,
CONCRETE ISLANDS, AND THERMOPLASTIC PAVEMENT MARKINGS



CLEARING ON THIS PROJECT SHALL BE TO THE LIMITS ESTABLISHED BY METHOD II AS DESCRIBED IN THE NCDOT STANDARD DRAWINGS

STATE	STATE PROJECT REFERENCE NO.	SHEET NO.	TOTAL SHEETS
N.C.	43957	1	
STATE PROJ. NO.	P.A. PROJ. NO.	DESCRIPTION	
43957		P.E.	
43957		RW	
43957		CONST.	

GRAPHIC SCALES



DESIGN DATA

ADT 2010 = 33,000
ADT 2025 = 44,000
DHV = 10 %
D = %
T = %
V = 60 MPH

PROJECT LENGTH

LENGTH OF ROADWAY PROJECT 43957 = 0.40 MILES
TOTAL LENGTH OF STATE PROJECT 43957 = 0.40 MILES

Prepared in the Office of:
DIVISION OF HIGHWAYS
DIVISION TEN
DIVISION DESIGN / CONSTRUCT UNIT

2012 STANDARD SPECIFICATIONS

RIGHT OF WAY DATE:

LETTING DATE:
July 1, 2015

RANDY BOWERS
PROJECT ENGINEER

TERRY BURLESON
PROJECT DESIGN ENGINEER



DIVISION OF HIGHWAYS
STATE OF NORTH CAROLINA

DocuSigned by:
Randy Bowers 6/12/2015

52A4A66079864B2...
APPROVED BY
DDC ENGINEER DATE

12/05/11

Note: Not to Scale

*S.U.E. = Subsurface Utility Engineering

STATE OF NORTH CAROLINA
DIVISION OF HIGHWAYS

CONVENTIONAL PLAN SHEET SYMBOLS

BOUNDARIES AND PROPERTY:

State Line	-----
County Line	-----
Township Line	-----
City Line	-----
Reservation Line	-----
Property Line	-----
Existing Iron Pin	○ EP
Property Corner	-----
Property Monument	□ EDM
Parcel/Sequence Number	① 23
Existing Fence Line	-x-x-x-
Proposed Woven Wire Fence	○
Proposed Chain Link Fence	□
Proposed Barbed Wire Fence	◇
Existing Wetland Boundary	----- MLB
Proposed Wetland Boundary	----- MLB
Existing Endangered Animal Boundary	----- EAB
Existing Endangered Plant Boundary	----- EPB
Known Soil Contamination: Area or Site	☠ ☠
Potential Soil Contamination: Area or Site	☠ ?

BUILDINGS AND OTHER CULTURE:

Gas Pump Vent or U/G Tank Cap	○
Sign	○
Well	○
Small Mine	✕
Foundation	□
Area Outline	□
Cemetery	⊕
Building	□
School	□
Church	⊕
Dam	▬

HYDROLOGY:

Stream or Body of Water	-----
Hydro, Pool or Reservoir	□
Jurisdictional Stream	----- JS
Buffer Zone 1	----- BZ 1
Buffer Zone 2	----- BZ 2
Flow Arrow	←
Disappearing Stream	-----
Spring	○
Wetland	-----
Proposed Lateral, Tail, Head Ditch	-----
False Sump	-----

RAILROADS:

Standard Gauge	-----
RR Signal Milepost	○
Switch	□
RR Abandoned	-----
RR Dismantled	-----

RIGHT OF WAY:

Baseline Control Point	◆
Existing Right of Way Marker	△
Existing Right of Way Line	-----
Proposed Right of Way Line	-----
Proposed Right of Way Line with Iron Pin and Cap Marker	○
Proposed Right of Way Line with Concrete or Granite R/W Marker	○
Proposed Control of Access Line with Concrete C/A Marker	○
Existing Control of Access	○
Proposed Control of Access	○
Existing Easement Line	----- E
Proposed Temporary Construction Easement	----- E
Proposed Temporary Drainage Easement	----- TDE
Proposed Permanent Drainage Easement	----- PDE
Proposed Permanent Drainage / Utility Easement	----- DUE
Proposed Permanent Utility Easement	----- PUE
Proposed Temporary Utility Easement	----- TUE
Proposed Aerial Utility Easement	----- AUE
Proposed Permanent Easement with Iron Pin and Cap Marker	◆

ROADS AND RELATED FEATURES:

Existing Edge of Pavement	-----
Existing Curb	-----
Proposed Slope Stakes Cut	----- C
Proposed Slope Stakes Fill	----- F
Proposed Curb Ramp	----- CR
Existing Metal Guardrail	-----
Proposed Guardrail	-----
Existing Cable Guiderail	-----
Proposed Cable Guiderail	-----
Equality Symbol	⊕
Pavement Removal	-----
Single Tree	☼
Single Shrub	☼
Hedge	-----
Woods Line	-----

VEGETATION:

Orchard	☼ ☼ ☼ ☼
Vineyard	□ Vineyard

EXISTING STRUCTURES:

MAJOR:	
Bridge, Tunnel or Box Culvert	----- CONC
Bridge Wing Wall, Head Wall and End Wall	----- CONC WW
MINOR:	
Head and End Wall	----- CONC HW
Pipe Culvert	-----
Footbridge	-----
Drainage Box: Catch Basin, DI or JB	□ CB
Paved Ditch Gutter	-----
Storm Sewer Manhole	⊕
Storm Sewer	-----

UTILITIES:

POWER:	
Existing Power Pole	●
Proposed Power Pole	○
Existing Joint Use Pole	●
Proposed Joint Use Pole	○
Power Manhole	⊕
Power Line Tower	⊗
Power Transformer	⊗
H-Frame Pole	●
Recorded U/G Power Line	----- P
Designated U/G Power Line (S.U.E.*)	----- P

TELEPHONE:

Existing Telephone Pole	●
Proposed Telephone Pole	○
Telephone Manhole	⊕
Telephone Booth	□
Telephone Pedestal	⊕
Telephone Cell Tower	⊗
U/G Telephone Cable Hand Hole	⊕
Recorded U/G Telephone Cable	----- T
Designated U/G Telephone Cable (S.U.E.*)	----- T
Recorded U/G Telephone Conduit	----- TC
Designated U/G Telephone Conduit (S.U.E.*)	----- TC
Recorded U/G Fiber Optics Cable	----- T FO
Designated U/G Fiber Optics Cable (S.U.E.*)	----- T FO

WATER:

Water Manhole	⊕
Water Meter	○
Water Valve	⊗
Water Hydrant	⊕
Recorded U/G Water Line	-----
Designated U/G Water Line (S.U.E.*)	-----
Above Ground Water Line	----- A/G Water

TV:

TV Satellite Dish	☼
TV Pedestal	⊕
TV Tower	⊗
U/G TV Cable Hand Hole	⊕
Recorded U/G TV Cable	----- TV
Designated U/G TV Cable (S.U.E.*)	----- TV
Recorded U/G Fiber Optic Cable	----- TV FO
Designated U/G Fiber Optic Cable (S.U.E.*)	----- TV FO

GAS:

Gas Valve	◇
Gas Meter	⊕
Recorded U/G Gas Line	----- G
Designated U/G Gas Line (S.U.E.*)	----- G
Above Ground Gas Line	----- A/G Gas

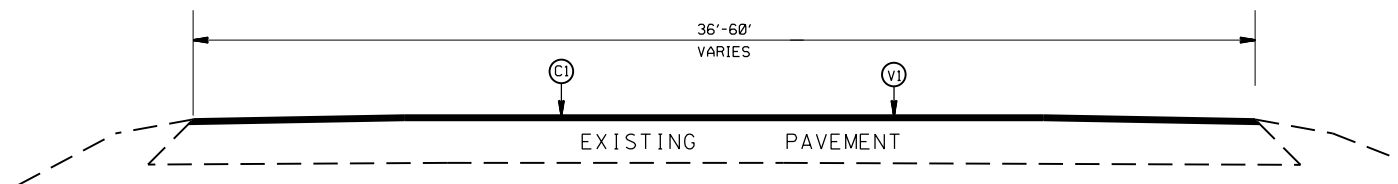
SANITARY SEWER:

Sanitary Sewer Manhole	⊕
Sanitary Sewer Cleanout	⊕
U/G Sanitary Sewer Line	----- SS
Above Ground Sanitary Sewer	----- A/G Sanitary Sewer
Recorded SS Forced Main Line	----- FSS
Designated SS Forced Main Line (S.U.E.*)	----- FSS

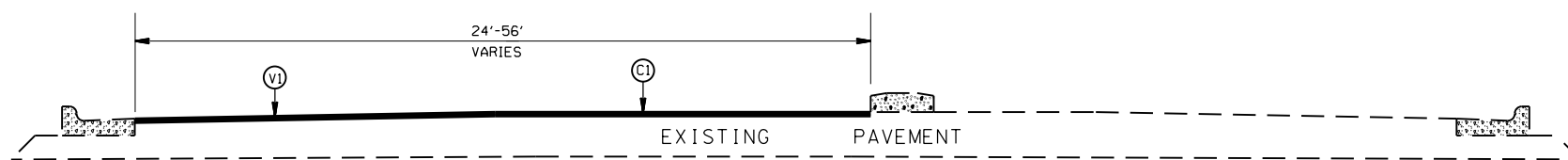
MISCELLANEOUS:

Utility Pole	●
Utility Pole with Base	□
Utility Located Object	○
Utility Traffic Signal Box	⊕
Utility Unknown U/G Line	----- TUTL
U/G Tank; Water, Gas, Oil	□
Underground Storage Tank, Approx. Loc.	⊕
A/G Tank; Water, Gas, Oil	□
Geoenvironmental Boring	⊕
U/G Test Hole (S.U.E.*)	⊕
Abandoned According to Utility Records	AATUR
End of Information	E.O.I.

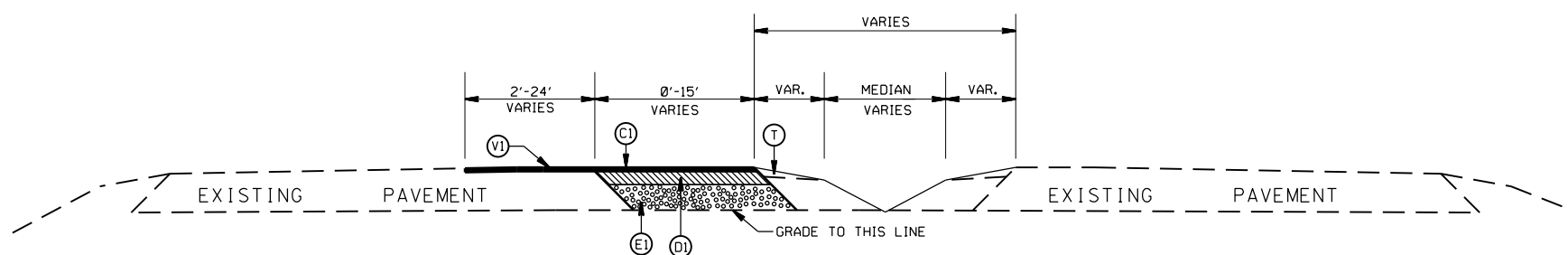
STATE	PROJECT NO.	SHEET NO.	TOTAL SHEETS
N.C.	43957	2	
F.A. PROJECT NO.			



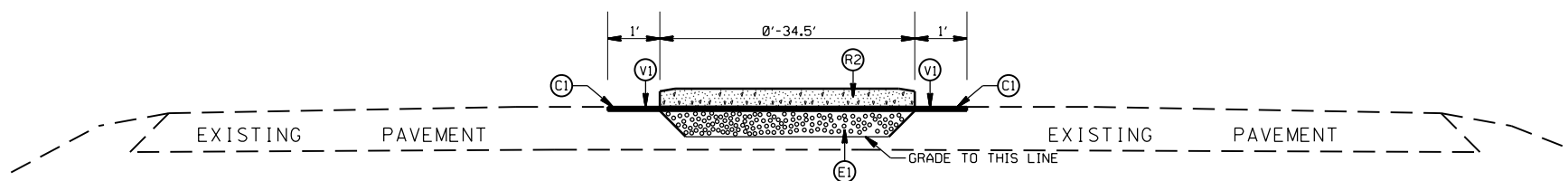
TYPICAL SECTION NO.4
STA 11+20 TO 12+13 -Y-



TYPICAL SECTION NO.3
STA 10+99 TO 17+75 -Y1-



TYPICAL SECTION NO.2
STA 12+84.67 TO 20+44.67 -L-



TYPICAL SECTION NO.1
STA 11+38.11 TO 11+74.54 -L-

PAVEMENT SCHEDULE

(C1)	PROP. APPROX. 1½" ASPHALT CONC. SURFACE COURSE, TYPE S9.5C, AT AN AVERAGE RATE OF 168 LBS. PER SQ. YD.
(C2)	PROP. APPROX. 3" ASPHALT CONC. SURFACE COURSE, TYPE S9.5C, AT AN AVERAGE RATE OF 168 LBS. PER SQ. YD. IN EACH OF TWO LAYERS.
(D1)	PROP. APPROX. 2.5" ASPHALT CONC. BINDER COURSE, TYPE I19.0C, AT AN AVERAGE RATE OF 285 LBS. PER SQ. YD.
(D2)	PROP. APPROX. 4" ASPHALT CONC. BINDER COURSE, TYPE I19.0C, AT AN AVERAGE RATE OF 456 LBS. PER SQ. YD.
(E1)	PROP. APPROX. 8.0" ASPHALT CONC. BASE COURSE, TYPE B25.0C, AT AN AVERAGE RATE OF 456 LBS. PER SQ. YD. IN EACH OF TWO LAYERS.
(E2)	PROP. APPROX. 5.0" ASPHALT CONC. BASE COURSE, TYPE B25.0C, AT AN AVERAGE RATE OF 570 LBS. PER SQ. YD.
(R1)	PROP. 2'-6" CURB & GUTTER
(R2)	PROP. 5" MONOLITHIC ISLAND (KEYED IN)
(R3)	PROP. 4" CONCRETE SIDEWALK
(T)	EARTH MATERIAL
(V1)	MILLING ASPHALT PAVEMENT, 1.5" IN DEPTH

*NOTE: ON TYPICAL *1 THE CONTRACTOR SHALL MILL APPROXIMATELY 1" OF THE EXISTING PAVEMENT TO REMOVE EXISTING PAVEMENT MARKINGS

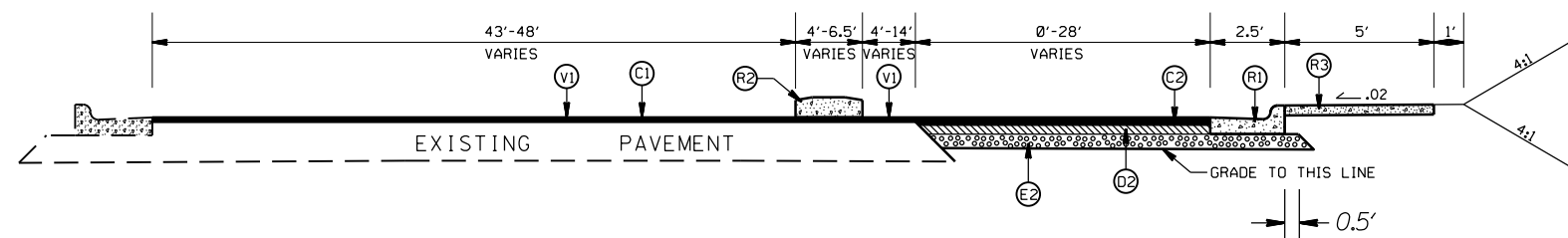
NC16 AND MT HOLLY-HUNTERSVILLE RD.(SR-2004)
ROADWAY IMPROVEMENTS IN
MECKLENBURG COUNTY

SCALE	N/A
DATE	7-13
DWG. BY	JDH
DESIGN BY	JDH
APPROVED	RWB

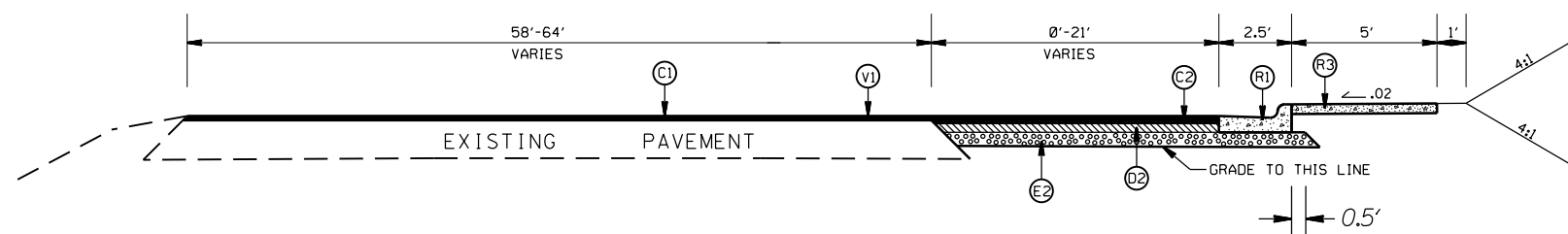


REVISIONS	

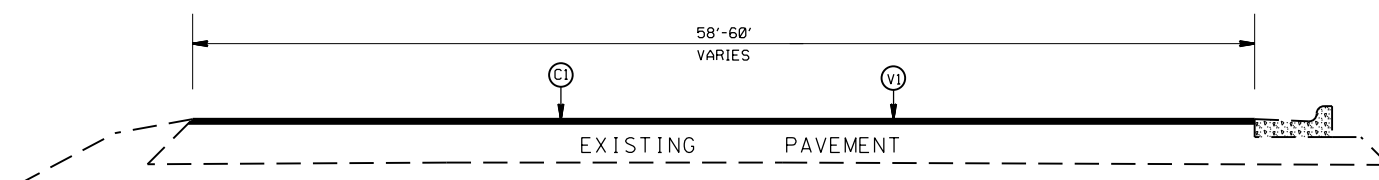
STATE	PROJECT NO.	SHEET NO.	TOTAL SHEETS
N.C.	43957	2A	
F.A. PROJECT NO.			



TYPICAL SECTION NO.7
STA 14+43.68 TO 15+70.34 -Y-



TYPICAL SECTION NO.6
STA 14+07 TO 14+43.68 -Y-



TYPICAL SECTION NO.5
STA 12+13 TO 14+07 -Y-

PAVEMENT SCHEDULE

(C1)	PROP. APPROX. 1½" ASPHALT CONC. SURFACE COURSE, TYPE S9.5C, AT AN AVERAGE RATE OF 168 LBS. PER SQ. YD.
(C2)	PROP. APPROX. 3" ASPHALT CONC. SURFACE COURSE, TYPE S9.5C, AT AN AVERAGE RATE OF 168 LBS. PER SQ. YD. IN EACH OF TWO LAYERS.
(D1)	PROP. APPROX. 2.5" ASPHALT CONC. BINDER COURSE, TYPE I19.0C, AT AN AVERAGE RATE OF 285 LBS. PER SQ. YD.
(D2)	PROP. APPROX. 4" ASPHALT CONC. BINDER COURSE, TYPE I19.0C, AT AN AVERAGE RATE OF 456 LBS. PER SQ. YD.
(E1)	PROP. APPROX. 8.0" ASPHALT CONC. BASE COURSE, TYPE B25.0C, AT AN AVERAGE RATE OF 456 LBS. PER SQ. YD. IN EACH OF TWO LAYERS.
(E2)	PROP. APPROX. 5.0" ASPHALT CONC. BASE COURSE, TYPE B25.0C, AT AN AVERAGE RATE OF 570 LBS. PER SQ. YD.
(R1)	PROP. 2'-6" CURB & GUTTER
(R2)	PROP. 5" MONOLITHIC ISLAND (KEYED IN)
(R3)	PROP. 4" CONCRETE SIDEWALK
(T)	EARTH MATERIAL
(V1)	MILLING ASPHALT PAVEMENT, 1.5" IN DEPTH

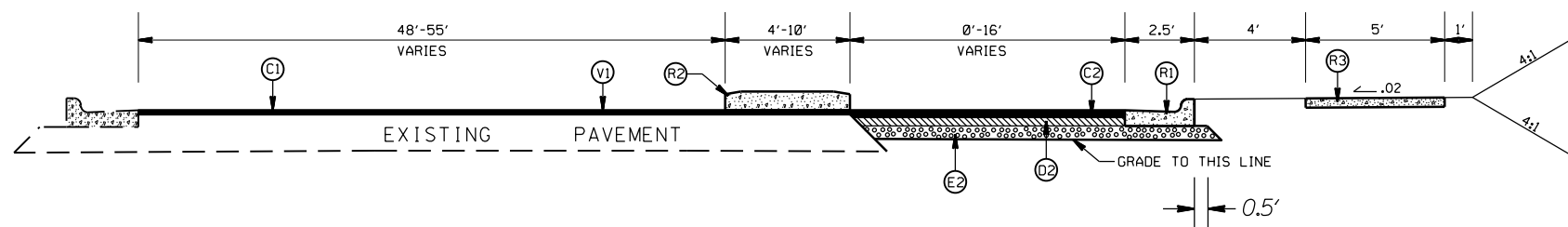
NC16 AND MT HOLLY-HUNTERSVILLE RD.(SR-2004)
ROADWAY IMPROVEMENTS IN
MECKLENBURG COUNTY

SCALE	N/A
DATE	7-13
DWG. BY	JDH
DESIGN BY	JDH
APPROVED	RWB

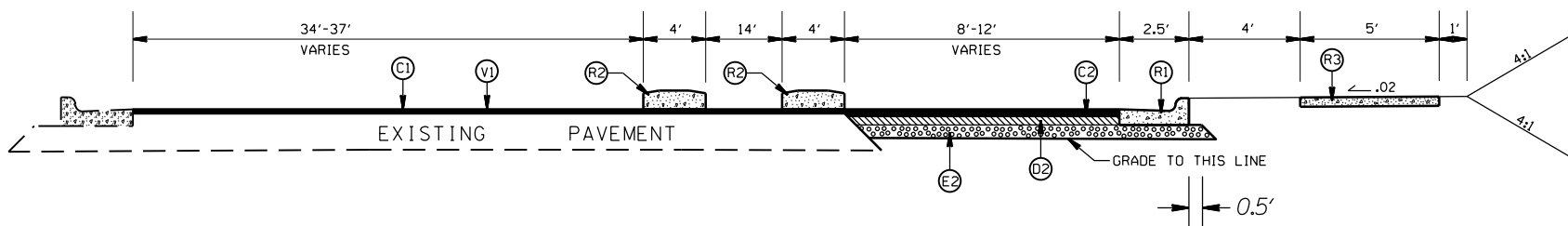


REVISIONS	

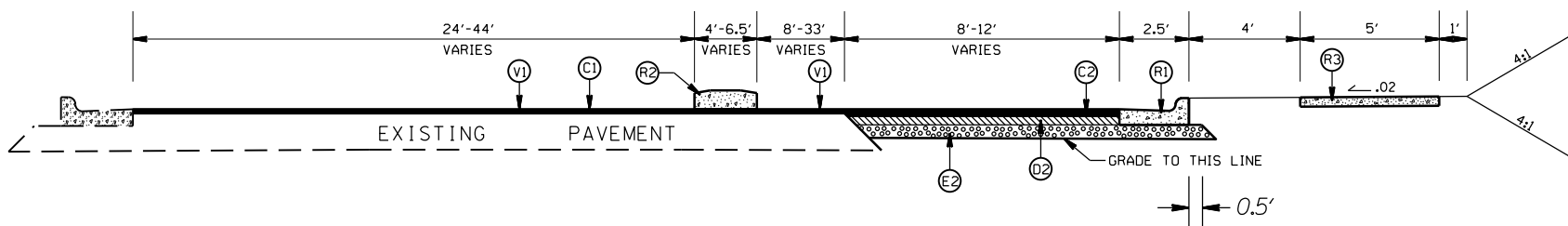
STATE	PROJECT NO.	SHEET NO.	TOTAL SHEETS
N.C.	43957	2B	
F.A. PROJECT NO.			



TYPICAL SECTION NO.10
STA 17+44.36 TO 18+39.40 -Y-



TYPICAL SECTION NO.9
STA 16+54.39 TO 17+44.36 -Y-



TYPICAL SECTION NO.8
STA 15+70.34 TO 16+54.39 -Y-
STA 19+29.40 TO 21+28 -Y-

PAVEMENT SCHEDULE

(C1)	PROP. APPROX. 1½" ASPHALT CONC. SURFACE COURSE, TYPE S9.5C, AT AN AVERAGE RATE OF 168 LBS. PER SQ. YD.
(C2)	PROP. APPROX. 3" ASPHALT CONC. SURFACE COURSE, TYPE S9.5C, AT AN AVERAGE RATE OF 168 LBS. PER SQ. YD. IN EACH OF TWO LAYERS.
(D1)	PROP. APPROX. 2.5" ASPHALT CONC. BINDER COURSE, TYPE I19.0C, AT AN AVERAGE RATE OF 285 LBS. PER SQ. YD.
(D2)	PROP. APPROX. 4" ASPHALT CONC. BINDER COURSE, TYPE I19.0C, AT AN AVERAGE RATE OF 456 LBS. PER SQ. YD.
(E1)	PROP. APPROX. 8.0" ASPHALT CONC. BASE COURSE, TYPE B25.0C, AT AN AVERAGE RATE OF 456 LBS. PER SQ. YD. IN EACH OF TWO LAYERS.
(E2)	PROP. APPROX. 5.0" ASPHALT CONC. BASE COURSE, TYPE B25.0C, AT AN AVERAGE RATE OF 570 LBS. PER SQ. YD.
(R1)	PROP. 2'-6" CURB & GUTTER
(R2)	PROP. 5" MONOLITHIC ISLAND (KEYED IN)
(R3)	PROP. 4" CONCRETE SIDEWALK
(T)	EARTH MATERIAL
(V1)	MILLING ASPHALT PAVEMENT, 1.5" IN DEPTH

NC16 AND MT HOLLY-HUNTERSVILLE RD.(SR-2004)
ROADWAY IMPROVEMENTS IN
MECKLENBURG COUNTY

SCALE	N/A
DATE	7-13
DWG. BY	JDH
DESIGN BY	JDH
APPROVED	RWB

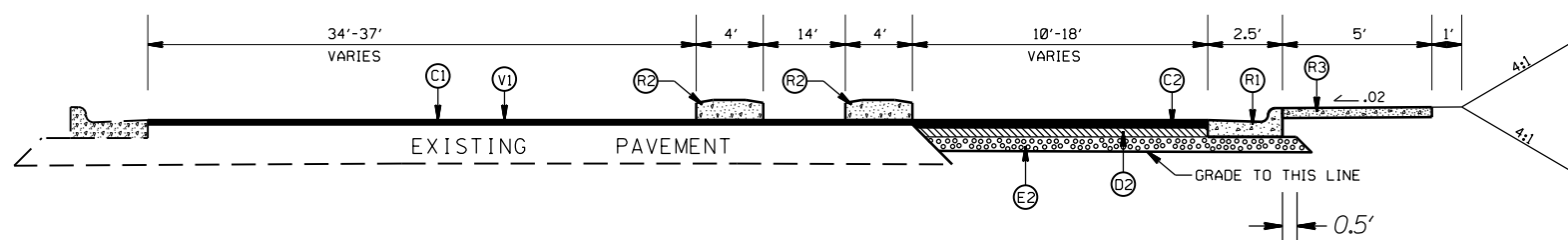


REVISIONS	

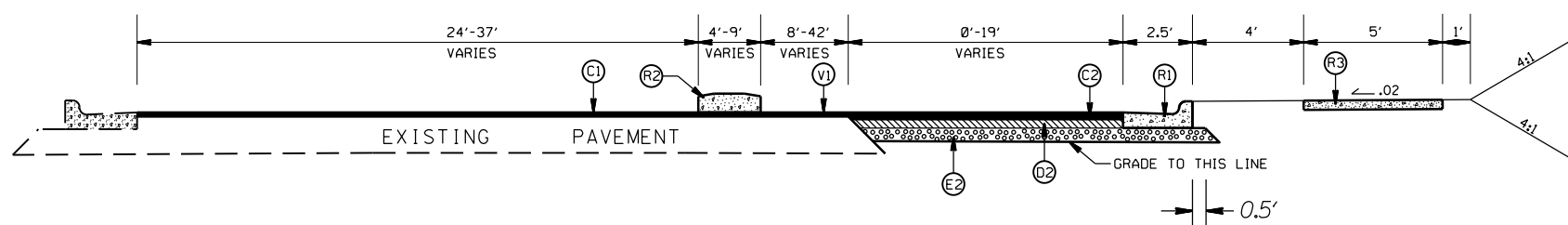
STATE	PROJECT NO.	SHEET NO.	TOTAL SHEETS
N.C.	43957	2C	
F.A. PROJECT NO.			

PAVEMENT SCHEDULE

(C1)	PROP. APPROX. 1½" ASPHALT CONC. SURFACE COURSE, TYPE S9.5C, AT AN AVERAGE RATE OF 168 LBS. PER SQ. YD.
(C2)	PROP. APPROX. 3" ASPHALT CONC. SURFACE COURSE, TYPE S9.5C, AT AN AVERAGE RATE OF 168 LBS. PER SQ. YD. IN EACH OF TWO LAYERS.
(D1)	PROP. APPROX. 2.5" ASPHALT CONC. BINDER COURSE, TYPE I19.0C, AT AN AVERAGE RATE OF 285 LBS. PER SQ. YD.
(D2)	PROP. APPROX. 4" ASPHALT CONC. BINDER COURSE, TYPE I19.0C, AT AN AVERAGE RATE OF 456 LBS. PER SQ. YD.
(E1)	PROP. APPROX. 8.0" ASPHALT CONC. BASE COURSE, TYPE B25.0C, AT AN AVERAGE RATE OF 456 LBS. PER SQ. YD. IN EACH OF TWO LAYERS.
(E2)	PROP. APPROX. 5.0" ASPHALT CONC. BASE COURSE, TYPE B25.0C, AT AN AVERAGE RATE OF 570 LBS. PER SQ. YD.
(R1)	PROP. 2'-6" CURB & GUTTER
(R2)	PROP. 5" MONOLITHIC ISLAND (KEYED IN)
(R3)	PROP. 4" CONCRETE SIDEWALK
(T)	EARTH MATERIAL
(V1)	MILLING ASPHALT PAVEMENT, 1.5" IN DEPTH



TYPICAL SECTION NO.13
STA 18+39.40 TO 19+29.40 -Y-



TYPICAL SECTION NO.12
STA 21+28 TO 24+21 -Y-

NC16 AND MT HOLLY-HUNTERSVILLE RD.(SR-2004)
ROADWAY IMPROVEMENTS IN
MECKLENBURG COUNTY

SCALE	N/A
DATE	7-13
DWG. BY	JDH
DESIGN BY	JDH
APPROVED	RWB

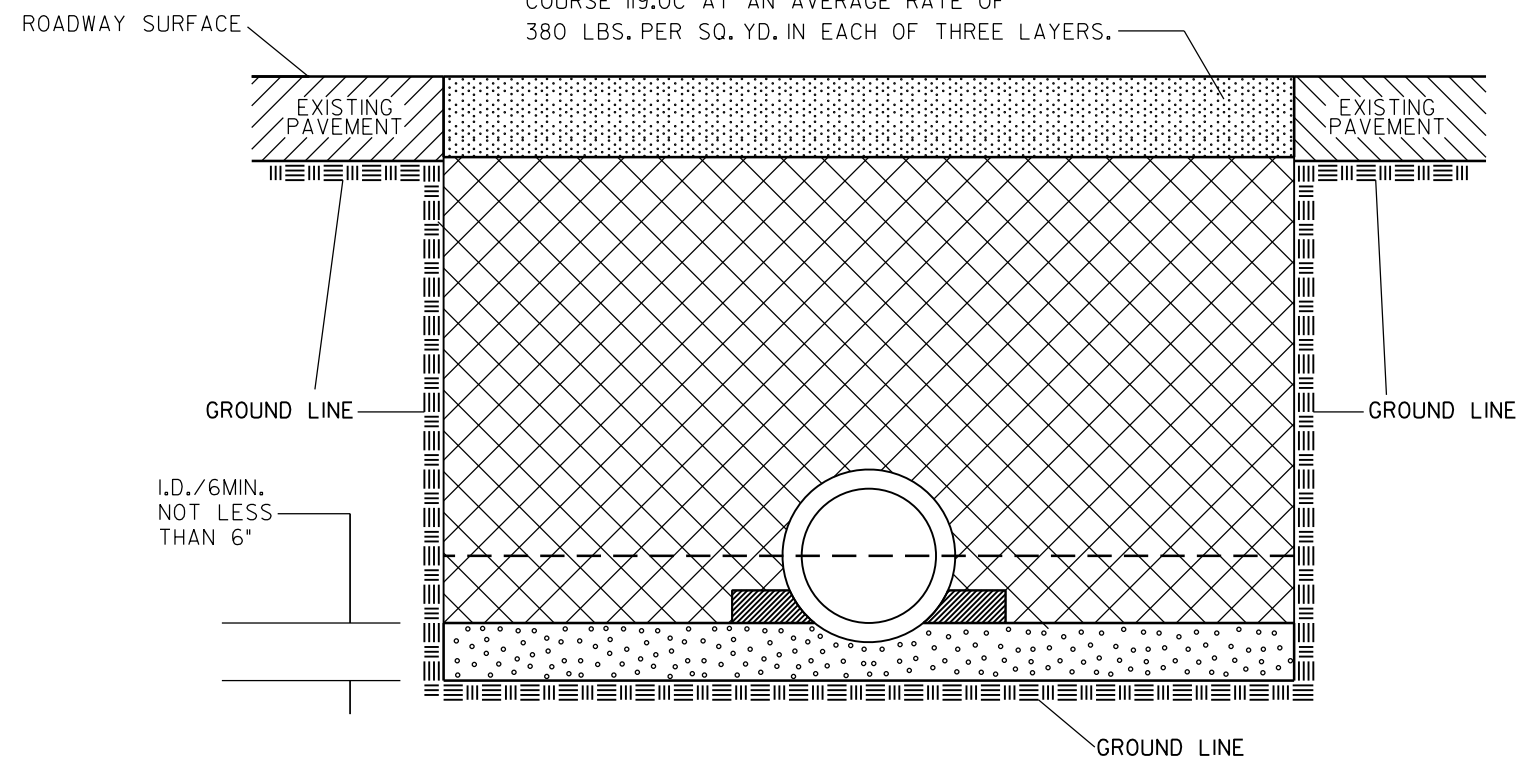


REVISIONS	

STATE	PROJECT NO.	SHEET NO.	TOTAL SHEETS
N.C.	43957	2D	
F.A. PROJECT NO.			

PIPE INSTALLATION STRUCTURE 407 TO 408

PROP. APPROX. 10" ASPHALT CONC. INTERMEDIATE
COURSE 119.0C AT AN AVERAGE RATE OF
380 LBS. PER SQ. YD. IN EACH OF THREE LAYERS.



NORMAL EARTH FOUNDATION

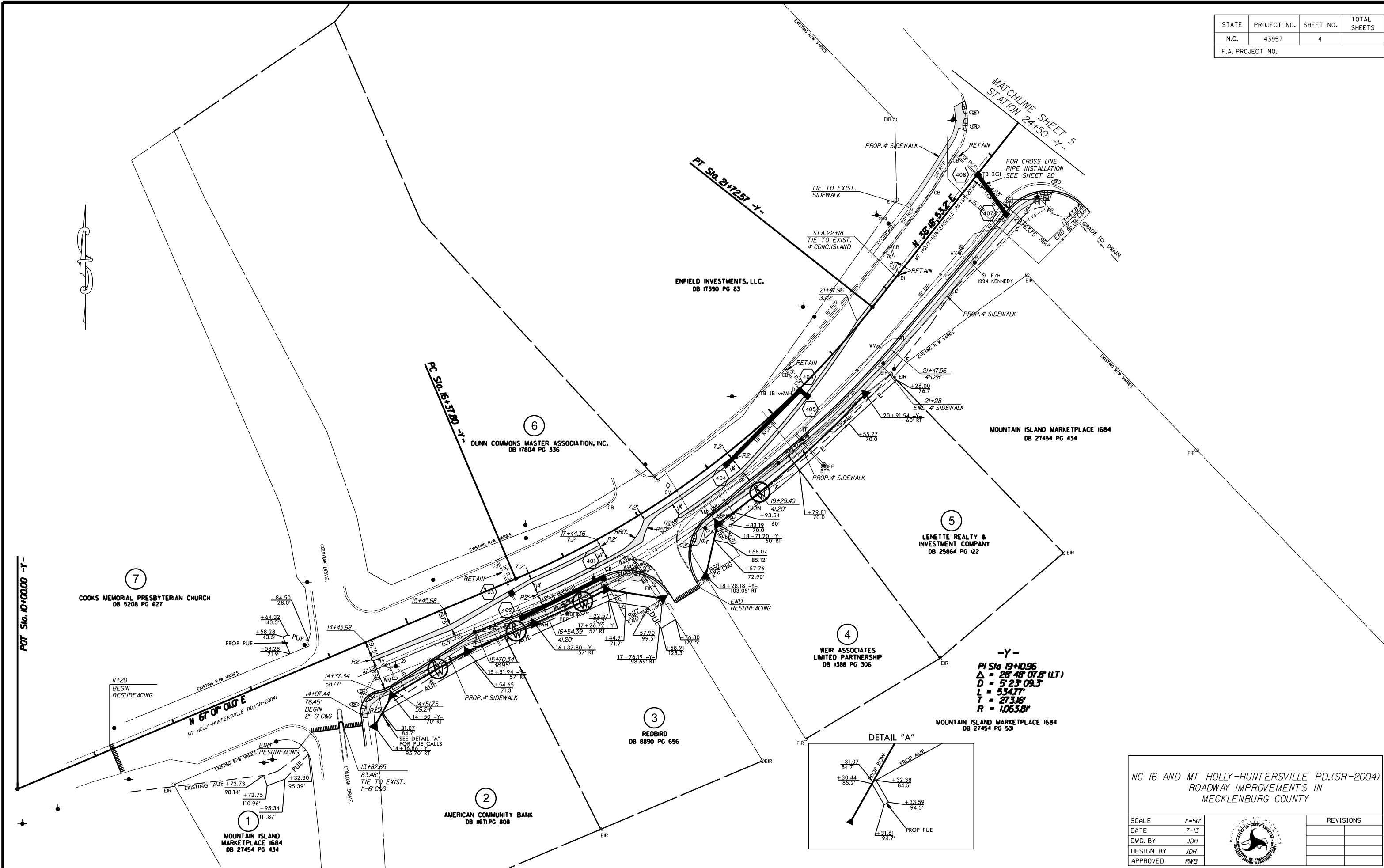
GENERAL NOTES:

- SPRINGLINE OF PIPE
- TAKE CARE TO FULLY COMPACT HAUNCH ZONE OF PIPE BACKFILL
- LOOSELY PLACED SELECT MATERIAL CLASS III OR CLASS II, TYPE I FOR PIPE BEDDING. LEAVE SECTION DIRECTLY BENEATH PIPE UNCOMPACTED AS PIPE SEATING AND BACKFILL WILL ACCOMPLISH COMPACTION.
- SELECT GRANULAR MATERIAL CLASS II, TYPE I.
- UNDISTURBED EARTH MATERIAL

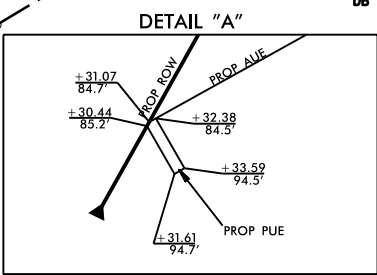
NC16 AND MT HOLLY-HUNTERSVILLE RD.(SR-2004)
ROADWAY IMPROVEMENTS IN
MECKLENBURG COUNTY

SCALE	N/A		REVISIONS	
DATE	3/2015			
DWG. BY	JDH			
DESIGN BY	JDH			
APPROVED	RWB			

STATE	PROJECT NO.	SHEET NO.	TOTAL SHEETS
N.C.	43957	4	
F.A. PROJECT NO.			



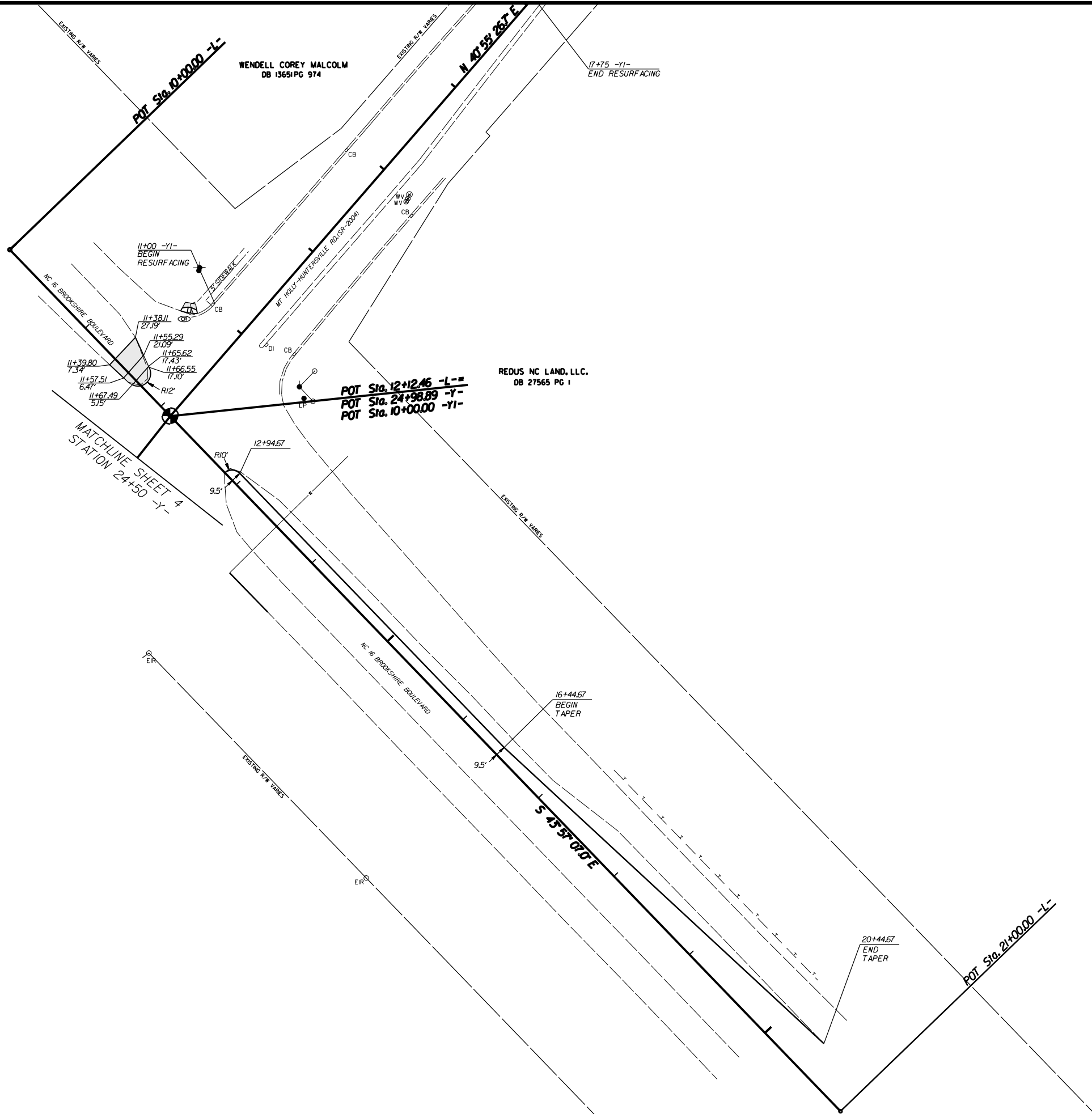
-Y-
 PI Sta 19+10.96
 $\Delta = 28' 48" 07.8" (LT)$
 $D = 5' 23" 09.3"$
 $L = 534.77'$
 $T = 273.16'$
 $R = 1063.8'$



NC 16 AND MT HOLLY-HUNTERSVILLE RD.(SR-2004)
 ROADWAY IMPROVEMENTS IN
 MECKLENBURG COUNTY

SCALE	1"=50'		REVISIONS
DATE	7-13		
DWG. BY	JDH		
DESIGN BY	JDH		
APPROVED	RWB		

STATE	PROJECT NO.	SHEET NO.	TOTAL SHEETS
N.C.	43957	5	
F.A. PROJECT NO.			



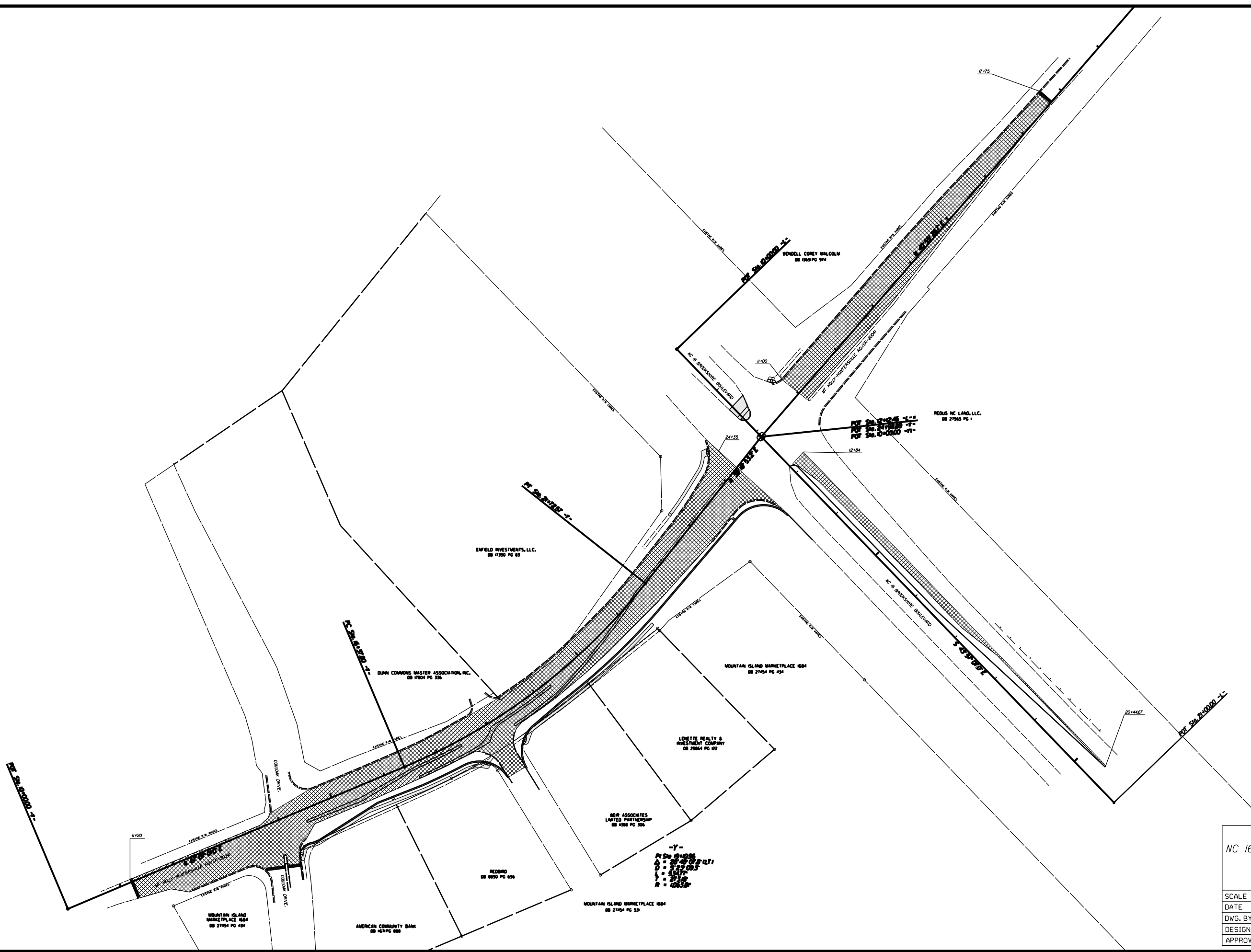
NC 16 AND MT HOLLY-HUNTERSVILLE RD.(SR-2004)
ROADWAY IMPROVEMENTS IN
MECKLENBURG COUNTY

SCALE	1"=50'
DATE	7-13
DWG. BY	JDH
DESIGN BY	JDH
APPROVED	RWB



REVISIONS	

STATE	PROJECT NO.	SHEET NO.	TOTAL SHEETS
N.C.	43957	6	
F.A. PROJECT NO.			



1.5" MILLING

NC 16 AND MT HOLLY-HUNTERSVILLE RD.(SR-2004)
ROADWAY IMPROVEMENTS IN
MECKLENBURG COUNTY

SCALE	N/A		REVISIONS
DATE	7-13		
DWG. BY	JDH		
DESIGN BY	JDH		
APPROVED	RWB		

STATE	STATE PROJECT REFERENCE NO.	SHEET NO.	TOTAL SHEETS
N.C.	43957	EC-1	
STATE PROJ. NO.	F.A. PROJ. NO.	DESCRIPTION	

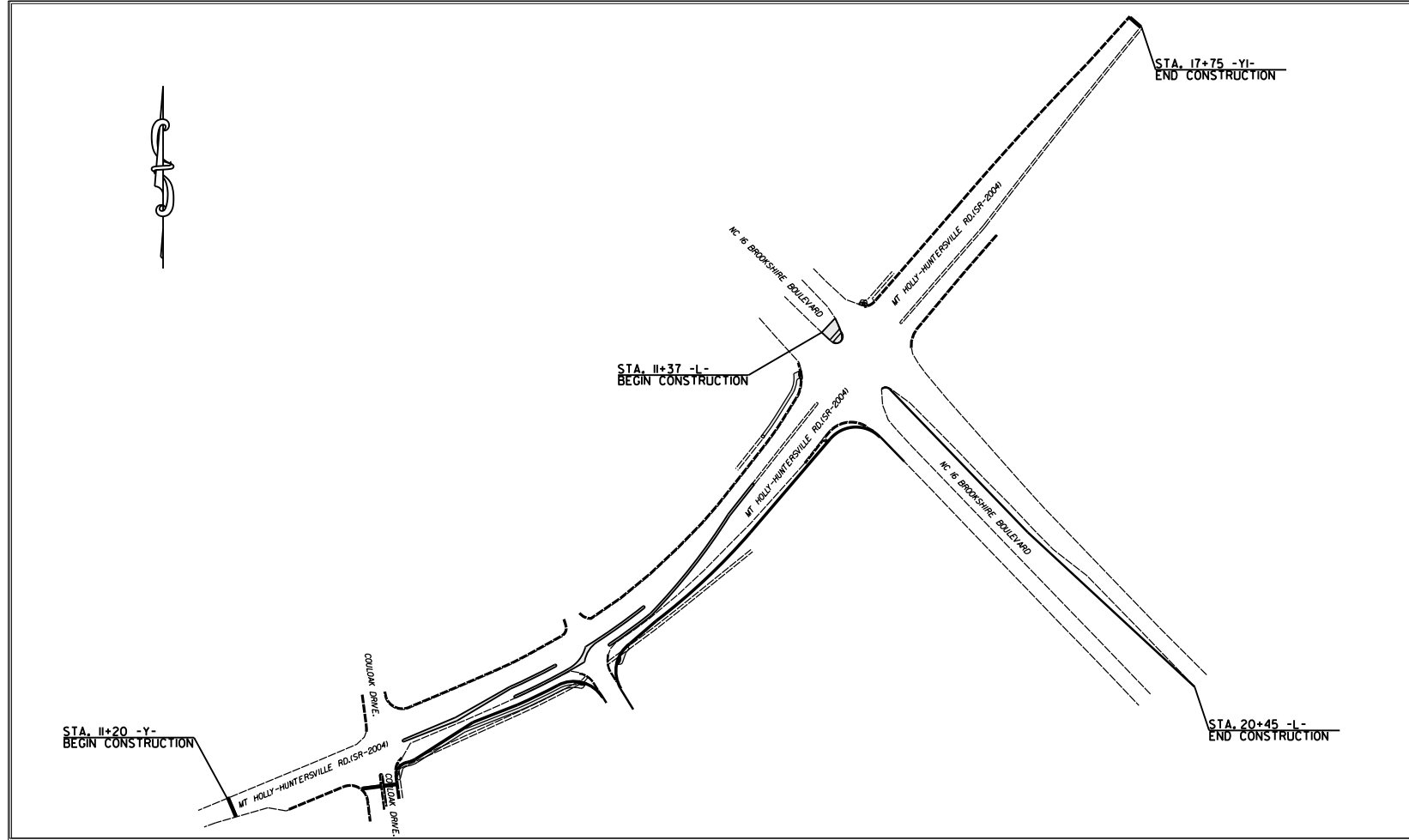
PROJECT: 43957

STATE OF NORTH CAROLINA
DIVISION OF HIGHWAYS

**PLAN FOR PROPOSED
HIGHWAY EROSION CONTROL**

EROSION AND SEDIMENT CONTROL MEASURES

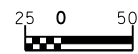
Std. #	Description	Symbol
1630.03	Temporary Silt Ditch	TD
1630.05	Temporary Diversion	TD
1605.01	Temporary Silt Fence	TSF
1606.01	Special Sediment Control Fence	SSCF
1622.01	Temporary Berms and Slope Drains	TBSD
1630.02	Silt Basin Type B	SB
1633.01	Temporary Rock Silt Check Type-A	T-RSC-A
	Temporary Rock Silt Check Type-A with Matting and Polyacrylamide (PAM)	T-RSC-A-PAM
1633.02	Temporary Rock Silt Check Type-B	T-RSC-B
	Wattle / Coir Fiber Wattle	W-CFW
	Wattle / Coir Fiber Wattle with Polyacrylamide (PAM)	W-CFW-PAM
1634.01	Temporary Rock Sediment Dam Type-A	TRSDA
1634.02	Temporary Rock Sediment Dam Type-B	TRSDB
1635.01	Rock Pipe Inlet Sediment Trap Type-A	RPISAT-A
1635.02	Rock Pipe Inlet Sediment Trap Type-B	RPISAT-B
1630.04	Stilling Basin	SB
1630.06	Special Stilling Basin	SSB
Rock Inlet Sediment Trap:		
1632.01	Type A	A
1632.02	Type B	B
1632.03	Type C	C
	Skimmer Basin	SKB
	Tiered Skimmer Basin	TSKB
	Infiltration Basin	IB



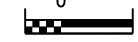
**THIS PROJECT CONTAINS
EROSION CONTROL PLANS
FOR CLEARING AND
GRUBBING PHASE OF
CONSTRUCTION.**

C:\JUN-2016\6600\1634\163401\163401.dgn

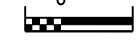
GRAPHIC SCALE



PLANS



PROFILE (HORIZONTAL)



PROFILE (VERTICAL)

ROADSIDE ENVIRONMENTAL UNIT
DIVISION OF HIGHWAYS
STATE OF NORTH CAROLINA

THESE EROSION AND SEDIMENT CONTROL PLANS COMPLY
WITH THE REGULATIONS SET FORTH BY THE
NCG-010000 GENERAL CONSTRUCTION PERMIT EFFECTIVE AUGUST 3, 2011
ISSUED BY THE NORTH CAROLINA DEPARTMENT OF ENVIRONMENT AND
NATURAL RESOURCES DIVISION OF WATER QUALITY.

Prepared In the Office of:
DIVISION DESIGN CONSTRUCT UNIT
716 W. Main St.
Albemarle, NC 28001
2012 STANDARD SPECIFICATIONS

TERRY W. BURLESON 3011
EROSION CONTROL DESIGNER LEVEL III-A CERTIFICATION #

Roadway Standard Drawings

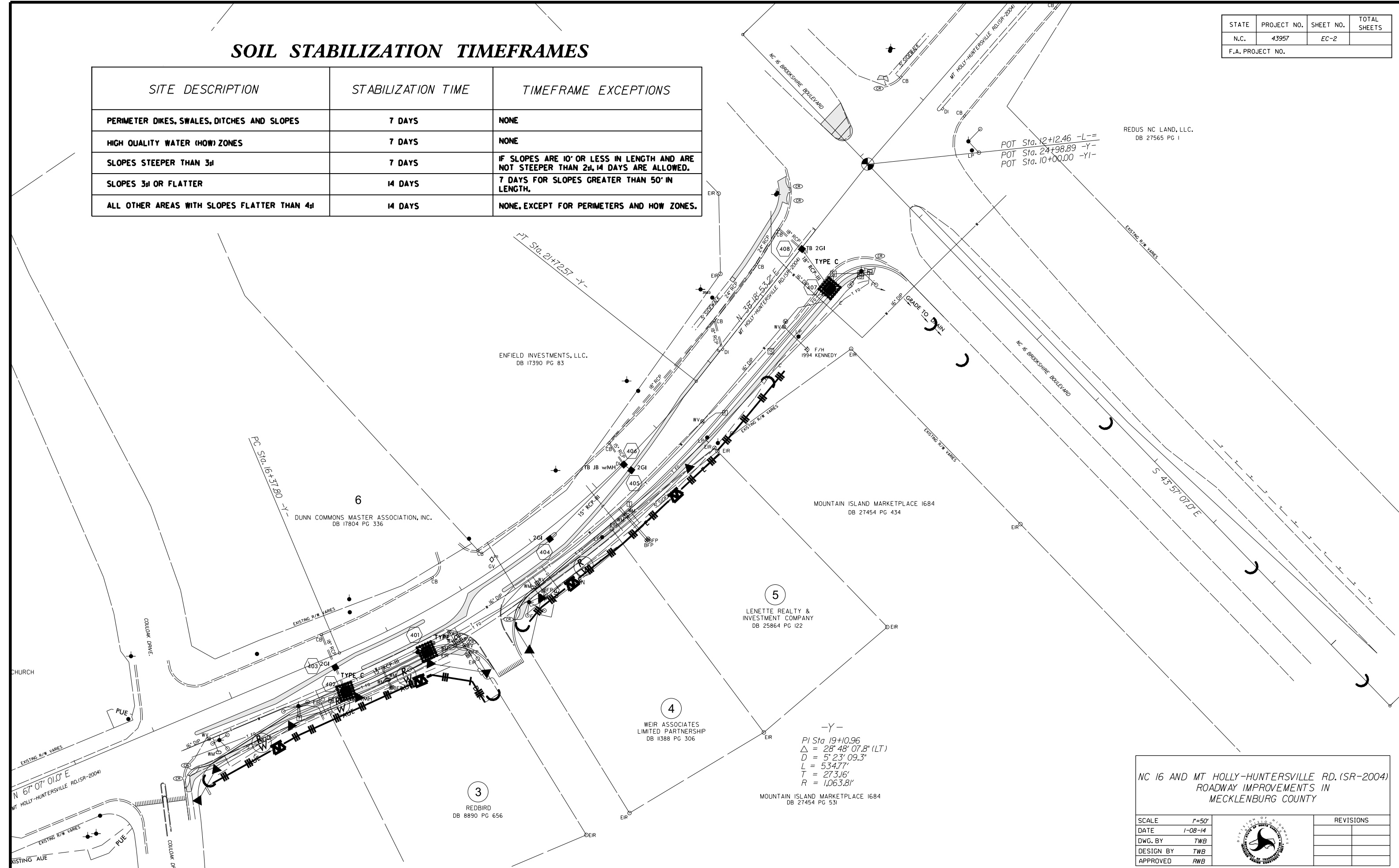
The following roadway english standards as appear in "Roadway Standard Drawings"– Roadway Design Unit – N. C. Department of Transportation – Raleigh, N. C., dated January 2012 and the latest revision thereto are applicable to this project and by reference hereby are considered a part of these plans.

1604.01	Railroad Erosion Control Detail	1632.01	Rock Inlet Sediment Trap Type A
1605.01	Temporary Silt Fence	1632.02	Rock Inlet Sediment Trap Type B
1606.01	Special Sediment Control Fence	1632.03	Rock Inlet Sediment Trap Type C
1607.01	Gravel Construction Entrance	1633.01	Temporary Rock Silt Check Type A
1622.01	Temporary Berms and Slope Drains	1633.02	Temporary Rock Silt Check Type B
1630.01	Riser Basin	1634.01	Temporary Rock Sediment Dam Type A
1630.02	Silt Basin Type B	1634.02	Temporary Rock Sediment Dam Type B
1630.03	Temporary Silt Ditch	1635.01	Rock Pipe Inlet Sediment Trap Type A
1630.04	Stilling Basin	1635.02	Rock Pipe Inlet Sediment Trap Type B
1630.05	Temporary Diversion	1640.01	Coir Fiber Baffle
1630.06	Special Stilling Basin	1645.01	Temporary Stream Crossing
1631.01	Matting Installation		


SOIL STABILIZATION TIMEFRAMES

STATE	PROJECT NO.	SHEET NO.	TOTAL SHEETS
N.C.	43957	EC-2	
F.A. PROJECT NO.			

SITE DESCRIPTION	STABILIZATION TIME	TIMEFRAME EXCEPTIONS
PERIMETER DIKES, SWALES, DITCHES AND SLOPES	7 DAYS	NONE
HIGH QUALITY WATER (HOW) ZONES	7 DAYS	NONE
SLOPES STEEPER THAN 3:1	7 DAYS	IF SLOPES ARE 10' OR LESS IN LENGTH AND ARE NOT STEEPER THAN 2:1, 14 DAYS ARE ALLOWED.
SLOPES 3:1 OR FLATTER	14 DAYS	7 DAYS FOR SLOPES GREATER THAN 50' IN LENGTH.
ALL OTHER AREAS WITH SLOPES FLATTER THAN 4:1	14 DAYS	NONE, EXCEPT FOR PERIMETERS AND HOW ZONES.



NC 16 AND MT HOLLY-HUNTERSVILLE RD. (SR-2004)
ROADWAY IMPROVEMENTS IN
MECKLENBURG COUNTY

SCALE	1"=50'		REVISIONS
DATE	1-08-14		
DWG. BY	TWB		
DESIGN BY	TWB		
APPROVED	RWB		

STATE	PROJECT NO.	SHEET NO.	TOTAL SHEETS
N.C.	43957	PMP-1	
F.A. PROJECT NO.			

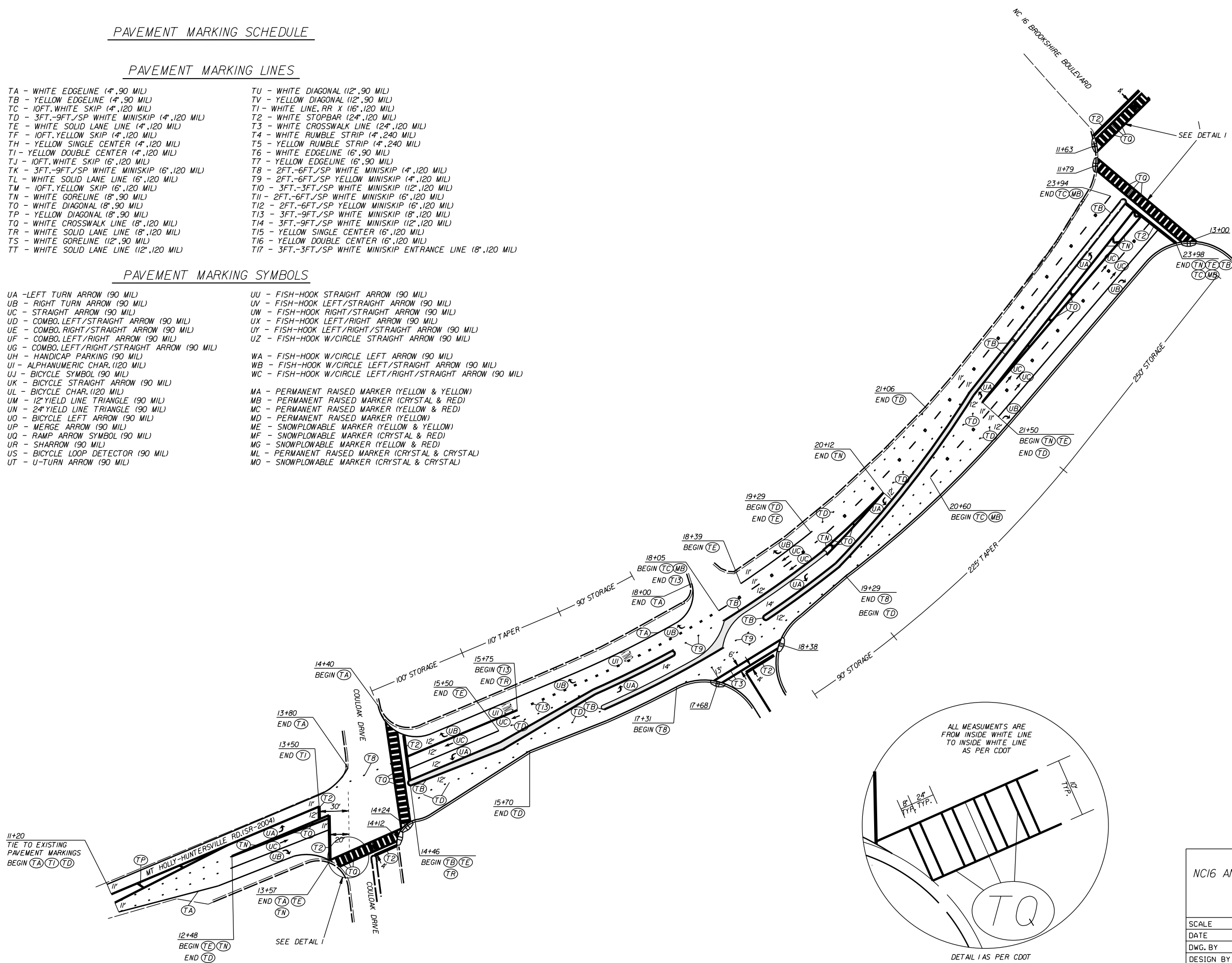
PAVEMENT MARKING SCHEDULE

PAVEMENT MARKING LINES

- | | |
|--|---|
| TA - WHITE EDGELINE (4',.90 MIL) | TU - WHITE DIAGONAL (12',.90 MIL) |
| TB - YELLOW EDGELINE (4',.90 MIL) | TV - YELLOW DIAGONAL (12',.90 MIL) |
| TC - 10FT. WHITE SKIP (4',.120 MIL) | T1 - WHITE LINE, RR X (16',.120 MIL) |
| TD - 3FT.-9FT./SP WHITE MINISKIP (4',.120 MIL) | T2 - WHITE STOPBAR (24',.120 MIL) |
| TE - WHITE SOLID LANE LINE (4',.120 MIL) | T3 - WHITE CROSSWALK LINE (24',.120 MIL) |
| TF - 10FT. YELLOW SKIP (4',.120 MIL) | T4 - WHITE RUMBLE STRIP (4',.240 MIL) |
| TH - YELLOW SINGLE CENTER (4',.120 MIL) | T5 - YELLOW RUMBLE STRIP (4',.240 MIL) |
| TI - YELLOW DOUBLE CENTER (4',.120 MIL) | T6 - WHITE EDGELINE (6',.90 MIL) |
| TJ - 10FT. WHITE SKIP (6',.120 MIL) | T7 - YELLOW EDGELINE (6',.90 MIL) |
| TK - 3FT.-9FT./SP WHITE MINISKIP (6',.120 MIL) | T8 - 2FT.-6FT./SP WHITE MINISKIP (4',.120 MIL) |
| TL - WHITE SOLID LANE LINE (6',.120 MIL) | T9 - 2FT.-6FT./SP YELLOW MINISKIP (4',.120 MIL) |
| TM - 10FT. YELLOW SKIP (6',.120 MIL) | T10 - 3FT.-3FT./SP WHITE MINISKIP (12',.120 MIL) |
| TN - WHITE GORELINE (8',.90 MIL) | T11 - 2FT.-6FT./SP WHITE MINISKIP (6',.120 MIL) |
| TO - WHITE DIAGONAL (8',.90 MIL) | T12 - 2FT.-6FT./SP YELLOW MINISKIP (6',.120 MIL) |
| TP - YELLOW DIAGONAL (8',.90 MIL) | T13 - 3FT.-9FT./SP WHITE MINISKIP (8',.120 MIL) |
| TQ - WHITE CROSSWALK LINE (8',.120 MIL) | T14 - 3FT.-9FT./SP WHITE MINISKIP (12',.120 MIL) |
| TR - WHITE SOLID LANE LINE (8',.120 MIL) | T15 - YELLOW SINGLE CENTER (6',.120 MIL) |
| TS - WHITE GORELINE (12',.90 MIL) | T16 - YELLOW DOUBLE CENTER (6',.120 MIL) |
| TT - WHITE SOLID LANE LINE (12',.120 MIL) | T17 - 3FT.-3FT./SP WHITE MINISKIP ENTRANCE LINE (8',.120 MIL) |

PAVEMENT MARKING SYMBOLS

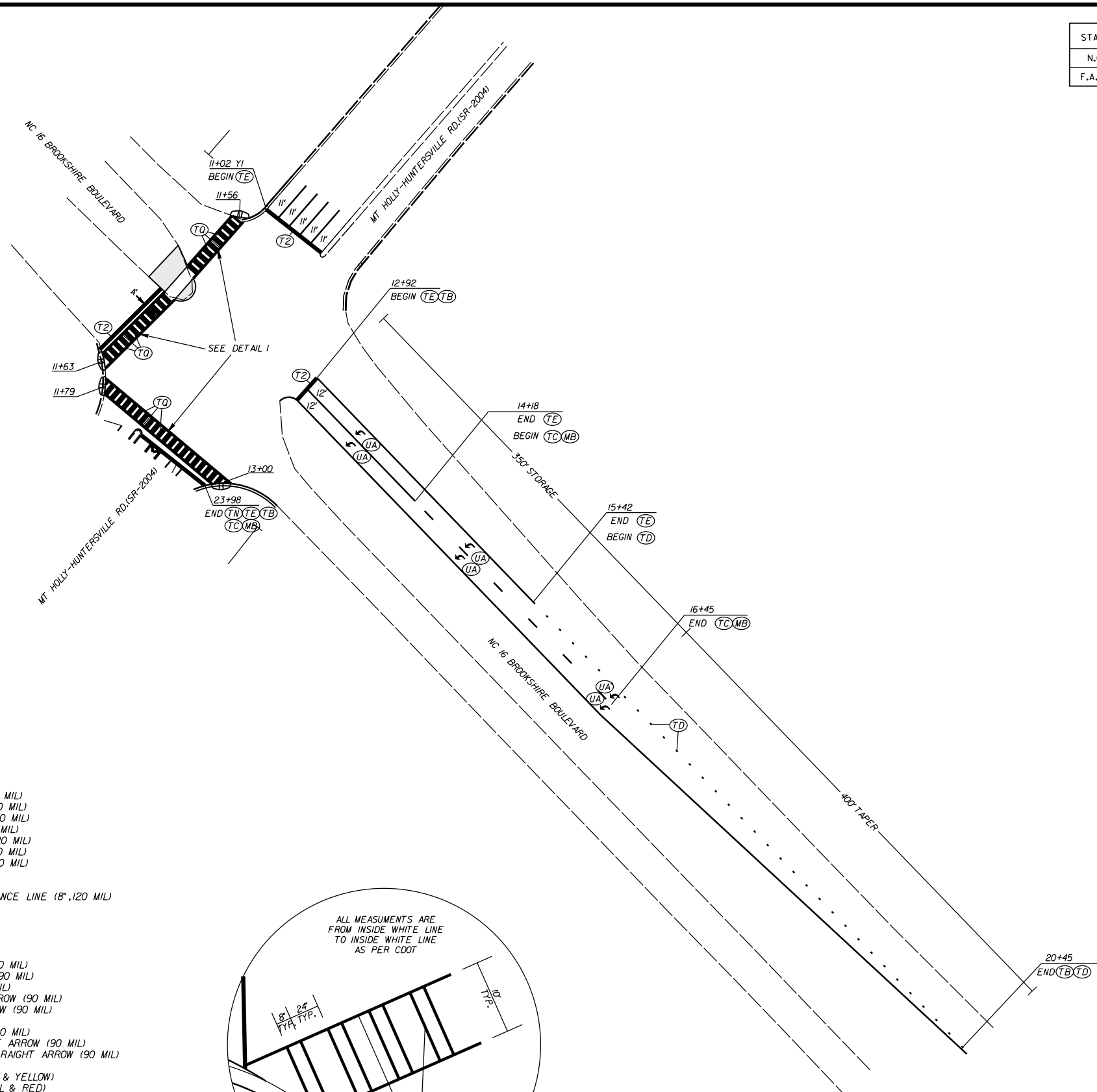
- | | |
|--|--|
| UA - LEFT TURN ARROW (90 MIL) | UU - FISH-HOOK STRAIGHT ARROW (90 MIL) |
| UB - RIGHT TURN ARROW (90 MIL) | UV - FISH-HOOK LEFT/STRAIGHT ARROW (90 MIL) |
| UC - STRAIGHT ARROW (90 MIL) | UW - FISH-HOOK RIGHT/STRAIGHT ARROW (90 MIL) |
| UD - COMBO. LEFT/STRAIGHT ARROW (90 MIL) | UX - FISH-HOOK LEFT/RIGHT ARROW (90 MIL) |
| UE - COMBO. RIGHT/STRAIGHT ARROW (90 MIL) | UY - FISH-HOOK LEFT/RIGHT/STRAIGHT ARROW (90 MIL) |
| UF - COMBO. LEFT/RIGHT ARROW (90 MIL) | UZ - FISH-HOOK W/CIRCLE STRAIGHT ARROW (90 MIL) |
| UG - COMBO. LEFT/RIGHT/STRAIGHT ARROW (90 MIL) | |
| UH - HANDICAP PARKING (90 MIL) | WA - FISH-HOOK W/CIRCLE LEFT ARROW (90 MIL) |
| UI - ALPHANUMERIC CHAR. (120 MIL) | WB - FISH-HOOK W/CIRCLE LEFT/STRAIGHT ARROW (90 MIL) |
| UJ - BICYCLE SYMBOL (90 MIL) | WC - FISH-HOOK W/CIRCLE LEFT/RIGHT/STRAIGHT ARROW (90 MIL) |
| UK - BICYCLE STRAIGHT ARROW (90 MIL) | |
| UL - BICYCLE CHAR. (120 MIL) | MA - PERMANENT RAISED MARKER (YELLOW & YELLOW) |
| UM - 12" YIELD LINE TRIANGLE (90 MIL) | MB - PERMANENT RAISED MARKER (CRYSTAL & RED) |
| UN - 24" YIELD LINE TRIANGLE (90 MIL) | MC - PERMANENT RAISED MARKER (YELLOW & RED) |
| UO - BICYCLE LEFT ARROW (90 MIL) | MD - PERMANENT RAISED MARKER (YELLOW) |
| UP - MERGE ARROW (90 MIL) | ME - SNOWPLOWABLE MARKER (YELLOW & YELLOW) |
| UQ - RAMP ARROW SYMBOL (90 MIL) | MF - SNOWPLOWABLE MARKER (CRYSTAL & RED) |
| UR - SHARROW (90 MIL) | MG - SNOWPLOWABLE MARKER (YELLOW & RED) |
| US - BICYCLE LOOP DETECTOR (90 MIL) | ML - PERMANENT RAISED MARKER (CRYSTAL & CRYSTAL) |
| UT - U-TURN ARROW (90 MIL) | MO - SNOWPLOWABLE MARKER (CRYSTAL & CRYSTAL) |



NC16 AND MT HOLLY-HUNTERSVILLE RD.(SR-2004)
ROADWAY IMPROVEMENTS IN
MECKLENBURG COUNTY

SCALE	1"=50'		REVISIONS
DATE	7-13		
DWG. BY	JDH		
DESIGN BY	JDH		
APPROVED	RWB		

STATE	PROJECT NO.	SHEET NO.	TOTAL SHEETS
N.C.	43957	PMP-2	
F.A. PROJECT NO.			



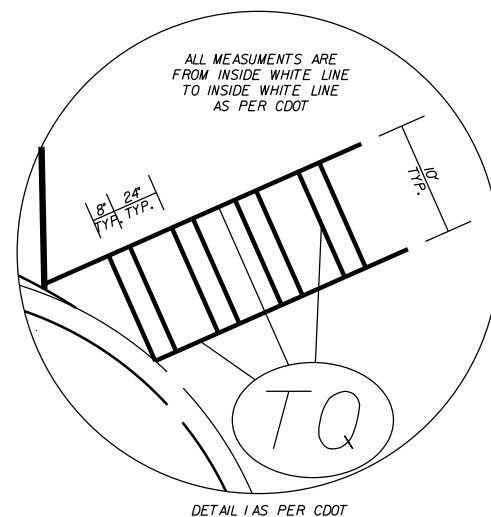
PAVEMENT MARKING SCHEDULE

PAVEMENT MARKING LINES

- | | |
|--|---|
| TA - WHITE EDGELINE (4',.90 MIL) | TU - WHITE DIAGONAL (12',.90 MIL) |
| TB - YELLOW EDGELINE (4',.90 MIL) | TV - YELLOW DIAGONAL (12',.90 MIL) |
| TC - 10FT. WHITE SKIP (4',.120 MIL) | T1 - WHITE LINE, RR 'X' (16',.120 MIL) |
| TD - 3FT.-9FT./SP WHITE MINISKIP (4',.120 MIL) | T2 - WHITE STOPBAR (24',.120 MIL) |
| TE - WHITE SOLID LANE LINE (4',.120 MIL) | T3 - WHITE CROSSWALK LINE (24',.120 MIL) |
| TF - 10FT. YELLOW SKIP (4',.120 MIL) | T4 - WHITE RUMBLE STRIP (4',.240 MIL) |
| TH - YELLOW SINGLE CENTER (4',.120 MIL) | T5 - YELLOW RUMBLE STRIP (4',.240 MIL) |
| TI - YELLOW DOUBLE CENTER (4',.120 MIL) | T6 - WHITE EDGELINE (6',.90 MIL) |
| TJ - 10FT. WHITE SKIP (6',.120 MIL) | T7 - YELLOW EDGELINE (6',.90 MIL) |
| TK - 3FT.-9FT./SP WHITE MINISKIP (6',.120 MIL) | T8 - 2FT.-6FT./SP WHITE MINISKIP (4',.120 MIL) |
| TL - WHITE SOLID LANE LINE (6',.120 MIL) | T9 - 2FT.-6FT./SP YELLOW MINISKIP (4',.120 MIL) |
| TM - 10FT. YELLOW SKIP (6',.120 MIL) | T10 - 3FT.-3FT./SP WHITE MINISKIP (12',.120 MIL) |
| TN - WHITE GORELINE (8',.90 MIL) | T11 - 2FT.-6FT./SP WHITE MINISKIP (6',.120 MIL) |
| TO - WHITE DIAGONAL (8',.90 MIL) | T12 - 2FT.-6FT./SP YELLOW MINISKIP (6',.120 MIL) |
| TP - YELLOW DIAGONAL (8',.90 MIL) | T13 - 3FT.-9FT./SP WHITE MINISKIP (8',.120 MIL) |
| TQ - WHITE CROSSWALK LINE (8',.120 MIL) | T14 - 3FT.-9FT./SP WHITE MINISKIP (12',.120 MIL) |
| TR - WHITE SOLID LANE LINE (8',.120 MIL) | T15 - YELLOW SINGLE CENTER (6',.120 MIL) |
| TS - WHITE GORELINE (12',.90 MIL) | T16 - YELLOW DOUBLE CENTER (6',.120 MIL) |
| TT - WHITE SOLID LANE LINE (12',.120 MIL) | T17 - 3FT.-3FT./SP WHITE MINISKIP ENTRANCE LINE (8',.120 MIL) |

PAVEMENT MARKING SYMBOLS

- | | |
|--|--|
| UA - LEFT TURN ARROW (90 MIL) | UU - FISH-HOOK STRAIGHT ARROW (90 MIL) |
| UB - RIGHT TURN ARROW (90 MIL) | UV - FISH-HOOK LEFT/STRAIGHT ARROW (90 MIL) |
| UC - STRAIGHT ARROW (90 MIL) | UW - FISH-HOOK RIGHT/STRAIGHT ARROW (90 MIL) |
| UD - COMBO. LEFT/STRAIGHT ARROW (90 MIL) | UX - FISH-HOOK LEFT/RIGHT ARROW (90 MIL) |
| UE - COMBO. RIGHT/STRAIGHT ARROW (90 MIL) | UY - FISH-HOOK LEFT/RIGHT/STRAIGHT ARROW (90 MIL) |
| UF - COMBO. LEFT/RIGHT ARROW (90 MIL) | UZ - FISH-HOOK W/CIRCLE STRAIGHT ARROW (90 MIL) |
| UG - COMBO. LEFT/RIGHT/STRAIGHT ARROW (90 MIL) | WA - FISH-HOOK W/CIRCLE LEFT ARROW (90 MIL) |
| UH - HANDICAP PARKING (90 MIL) | WB - FISH-HOOK W/CIRCLE LEFT/STRAIGHT ARROW (90 MIL) |
| UI - ALPHANUMERIC CHAR. (120 MIL) | WC - FISH-HOOK W/CIRCLE LEFT/RIGHT/STRAIGHT ARROW (90 MIL) |
| UJ - BICYCLE SYMBOL (90 MIL) | MA - PERMANENT RAISED MARKER (YELLOW & YELLOW) |
| UK - BICYCLE STRAIGHT ARROW (90 MIL) | MB - PERMANENT RAISED MARKER (CRYSTAL & RED) |
| UL - BICYCLE CHAR. (120 MIL) | MC - PERMANENT RAISED MARKER (YELLOW & RED) |
| UM - 12" YIELD LINE TRIANGLE (90 MIL) | MD - PERMANENT RAISED MARKER (YELLOW) |
| UN - 24" YIELD LINE TRIANGLE (90 MIL) | ME - SNOWPLOWABLE MARKER (YELLOW & YELLOW) |
| UO - BICYCLE LEFT ARROW (90 MIL) | MF - SNOWPLOWABLE MARKER (CRYSTAL & RED) |
| UP - MERGE ARROW (90 MIL) | MG - SNOWPLOWABLE MARKER (YELLOW & RED) |
| UQ - RAMP ARROW SYMBOL (90 MIL) | ML - PERMANENT RAISED MARKER (CRYSTAL & CRYSTAL) |
| UR - SHARROW (90 MIL) | MO - SNOWPLOWABLE MARKER (CRYSTAL & CRYSTAL) |
| US - BICYCLE LOOP DETECTOR (90 MIL) | |
| UT - U-TURN ARROW (90 MIL) | |



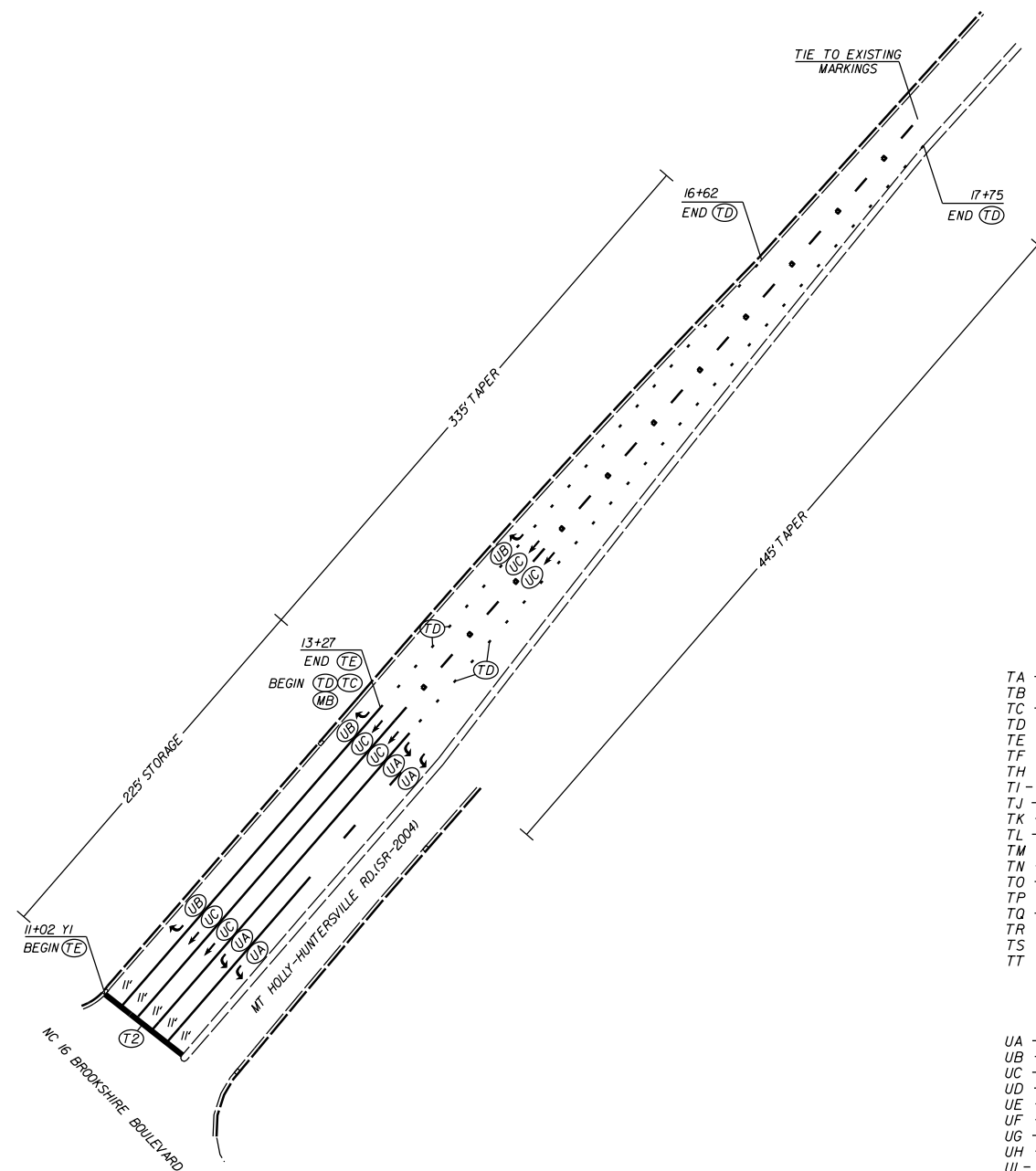
NC16 MT HOLLY-HUNTERSVILLE RD.(SR-2004)
ROADWAY IMPROVEMENTS IN
MECKLENBURG COUNTY

SCALE	1"=50'
DATE	7-13
DWG. BY	JDH
DESIGN BY	JDH
APPROVED	RWB



REVISIONS

STATE	PROJECT NO.	SHEET NO.	TOTAL SHEETS
N.C.	43957	PMP-3	
F.A. PROJECT NO.			



PAVEMENT MARKING SCHEDULE

PAVEMENT MARKING LINES

- | | |
|--|---|
| TA - WHITE EDGELINE (4',.90 MIL) | TU - WHITE DIAGONAL (12',.90 MIL) |
| TB - YELLOW EDGELINE (4',.90 MIL) | TV - YELLOW DIAGONAL (12',.90 MIL) |
| TC - 10FT. WHITE SKIP (4',.120 MIL) | T1 - WHITE LINE, RR X (16',.120 MIL) |
| TD - 3FT.-9FT./SP WHITE MINISKIP (4',.120 MIL) | T2 - WHITE STOPBAR (24',.120 MIL) |
| TE - WHITE SOLID LANE LINE (4',.120 MIL) | T3 - WHITE CROSSWALK LINE (24',.120 MIL) |
| TF - 10FT. YELLOW SKIP (4',.120 MIL) | T4 - WHITE RUMBLE STRIP (4',.240 MIL) |
| TH - YELLOW SINGLE CENTER (4',.120 MIL) | T5 - YELLOW RUMBLE STRIP (4',.240 MIL) |
| TI - YELLOW DOUBLE CENTER (4',.120 MIL) | T6 - WHITE EDGELINE (6',.90 MIL) |
| TJ - 10FT. WHITE SKIP (6',.120 MIL) | T7 - YELLOW EDGELINE (6',.90 MIL) |
| TK - 3FT.-9FT./SP WHITE MINISKIP (6',.120 MIL) | T8 - 2FT.-6FT./SP WHITE MINISKIP (4',.120 MIL) |
| TL - WHITE SOLID LANE LINE (6',.120 MIL) | T9 - 2FT.-6FT./SP YELLOW MINISKIP (4',.120 MIL) |
| TM - 10FT. YELLOW SKIP (6',.120 MIL) | T10 - 3FT.-3FT./SP WHITE MINISKIP (12',.120 MIL) |
| TN - WHITE GORELINE (8',.90 MIL) | T11 - 2FT.-6FT./SP WHITE MINISKIP (6',.120 MIL) |
| TO - WHITE DIAGONAL (8',.90 MIL) | T12 - 2FT.-6FT./SP YELLOW MINISKIP (6',.120 MIL) |
| TP - YELLOW DIAGONAL (8',.90 MIL) | T13 - 3FT.-9FT./SP WHITE MINISKIP (8',.120 MIL) |
| TQ - WHITE CROSSWALK LINE (8',.120 MIL) | T14 - 3FT.-9FT./SP WHITE MINISKIP (12',.120 MIL) |
| TR - WHITE SOLID LANE LINE (8',.120 MIL) | T15 - YELLOW SINGLE CENTER (6',.120 MIL) |
| TS - WHITE GORELINE (12',.90 MIL) | T16 - YELLOW DOUBLE CENTER (6',.120 MIL) |
| TT - WHITE SOLID LANE LINE (12',.120 MIL) | T17 - 3FT.-3FT./SP WHITE MINISKIP ENTRANCE LINE (8',.120 MIL) |

PAVEMENT MARKING SYMBOLS

- | | |
|--|--|
| UA - LEFT TURN ARROW (90 MIL) | UU - FISH-HOOK STRAIGHT ARROW (90 MIL) |
| UB - RIGHT TURN ARROW (90 MIL) | UV - FISH-HOOK LEFT/STRAIGHT ARROW (90 MIL) |
| UC - STRAIGHT ARROW (90 MIL) | UW - FISH-HOOK RIGHT/STRAIGHT ARROW (90 MIL) |
| UD - COMBO. LEFT/STRAIGHT ARROW (90 MIL) | UX - FISH-HOOK LEFT/RIGHT ARROW (90 MIL) |
| UE - COMBO. RIGHT/STRAIGHT ARROW (90 MIL) | UY - FISH-HOOK LEFT/RIGHT/STRAIGHT ARROW (90 MIL) |
| UF - COMBO. LEFT/RIGHT ARROW (90 MIL) | UZ - FISH-HOOK W/CIRCLE STRAIGHT ARROW (90 MIL) |
| UG - COMBO. LEFT/RIGHT/STRAIGHT ARROW (90 MIL) | |
| UH - HANDICAP PARKING (90 MIL) | WA - FISH-HOOK W/CIRCLE LEFT ARROW (90 MIL) |
| UI - ALPHANUMERIC CHAR. (120 MIL) | WB - FISH-HOOK W/CIRCLE LEFT/STRAIGHT ARROW (90 MIL) |
| UJ - BICYCLE SYMBOL (90 MIL) | WC - FISH-HOOK W/CIRCLE LEFT/RIGHT/STRAIGHT ARROW (90 MIL) |
| UK - BICYCLE STRAIGHT ARROW (90 MIL) | |
| UL - BICYCLE CHAR. (120 MIL) | MA - PERMANENT RAISED MARKER (YELLOW & YELLOW) |
| UM - 12" YIELD LINE TRIANGLE (90 MIL) | MB - PERMANENT RAISED MARKER (CRYSTAL & RED) |
| UN - 24" YIELD LINE TRIANGLE (90 MIL) | MC - PERMANENT RAISED MARKER (YELLOW & RED) |
| UO - BICYCLE LEFT ARROW (90 MIL) | MD - PERMANENT RAISED MARKER (YELLOW) |
| UP - MERGE ARROW (90 MIL) | ME - SNOWPLOWABLE MARKER (YELLOW & YELLOW) |
| UQ - RAMP ARROW SYMBOL (90 MIL) | MF - SNOWPLOWABLE MARKER (CRYSTAL & RED) |
| UR - SHARROW (90 MIL) | MG - SNOWPLOWABLE MARKER (YELLOW & RED) |
| US - BICYCLE LOOP DETECTOR (90 MIL) | ML - PERMANENT RAISED MARKER (CRYSTAL & CRYSTAL) |
| UT - U-TURN ARROW (90 MIL) | MO - SNOWPLOWABLE MARKER (CRYSTAL & CRYSTAL) |



NC16 AND MT HOLLY-HUNTERSVILLE RD.(SR-2004)
ROADWAY IMPROVEMENTS IN
MECKLENBURG COUNTY

SCALE	r=50'		REVISIONS
DATE	7-13		
DWG. BY	JDH		
DESIGN BY	JDH		
APPROVED	RWB		

STATE	PROJECT NO.	SHEET NO.	TOTAL SHEETS
N.C.	43957	UC-1	
F.A. PROJECT NO.			

REDUS NC LAND, LLC.
DB 27565 PG 1

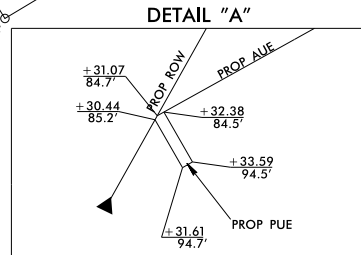
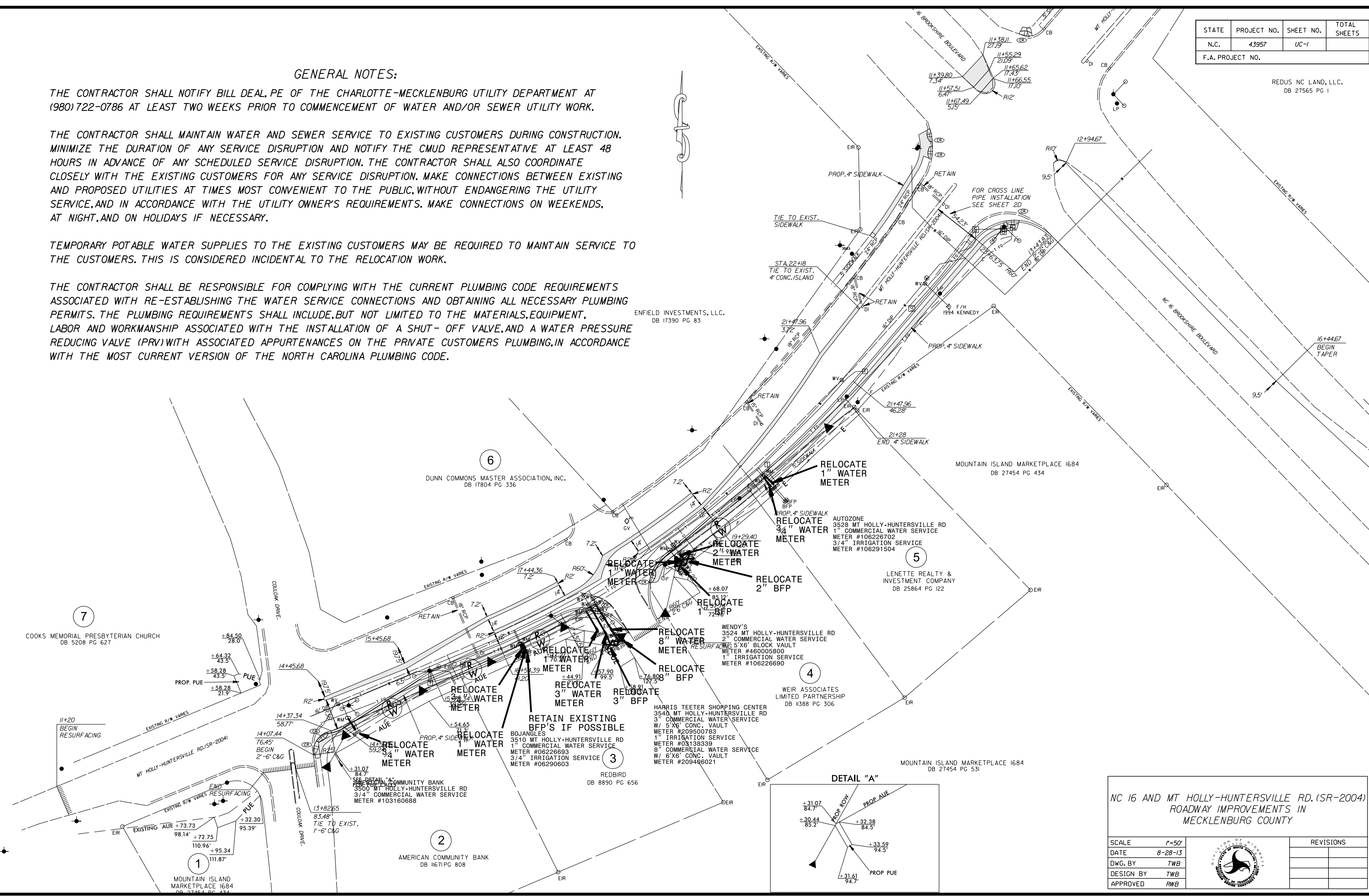
GENERAL NOTES:

THE CONTRACTOR SHALL NOTIFY BILL DEAL, PE OF THE CHARLOTTE-MECKLENBURG UTILITY DEPARTMENT AT (980)722-0786 AT LEAST TWO WEEKS PRIOR TO COMMENCEMENT OF WATER AND/OR SEWER UTILITY WORK.

THE CONTRACTOR SHALL MAINTAIN WATER AND SEWER SERVICE TO EXISTING CUSTOMERS DURING CONSTRUCTION. MINIMIZE THE DURATION OF ANY SERVICE DISRUPTION AND NOTIFY THE CMUD REPRESENTATIVE AT LEAST 48 HOURS IN ADVANCE OF ANY SCHEDULED SERVICE DISRUPTION. THE CONTRACTOR SHALL ALSO COORDINATE CLOSELY WITH THE EXISTING CUSTOMERS FOR ANY SERVICE DISRUPTION. MAKE CONNECTIONS BETWEEN EXISTING AND PROPOSED UTILITIES AT TIMES MOST CONVENIENT TO THE PUBLIC, WITHOUT ENDANGERING THE UTILITY SERVICE, AND IN ACCORDANCE WITH THE UTILITY OWNER'S REQUIREMENTS. MAKE CONNECTIONS ON WEEKENDS, AT NIGHT, AND ON HOLIDAYS IF NECESSARY.

TEMPORARY POTABLE WATER SUPPLIES TO THE EXISTING CUSTOMERS MAY BE REQUIRED TO MAINTAIN SERVICE TO THE CUSTOMERS. THIS IS CONSIDERED INCIDENTAL TO THE RELOCATION WORK.


THE CONTRACTOR SHALL BE RESPONSIBLE FOR COMPLYING WITH THE CURRENT PLUMBING CODE REQUIREMENTS ASSOCIATED WITH RE-ESTABLISHING THE WATER SERVICE CONNECTIONS AND OBTAINING ALL NECESSARY PLUMBING PERMITS. THE PLUMBING REQUIREMENTS SHALL INCLUDE, BUT NOT LIMITED TO THE MATERIALS, EQUIPMENT, LABOR AND WORKMANSHIP ASSOCIATED WITH THE INSTALLATION OF A SHUT-OFF VALVE, AND A WATER PRESSURE REDUCING VALVE (PRV) WITH ASSOCIATED APPURTENANCES ON THE PRIVATE CUSTOMERS PLUMBING, IN ACCORDANCE WITH THE MOST CURRENT VERSION OF THE NORTH CAROLINA PLUMBING CODE.



NC 16 AND MT HOLLY-HUNTERSVILLE RD. (SR-2004)
ROADWAY IMPROVEMENTS IN
MECKLENBURG COUNTY

SCALE	1"=50'
DATE	8-28-13
DWG. BY	TWB
DESIGN BY	TWB
APPROVED	RWB

REVISIONS	



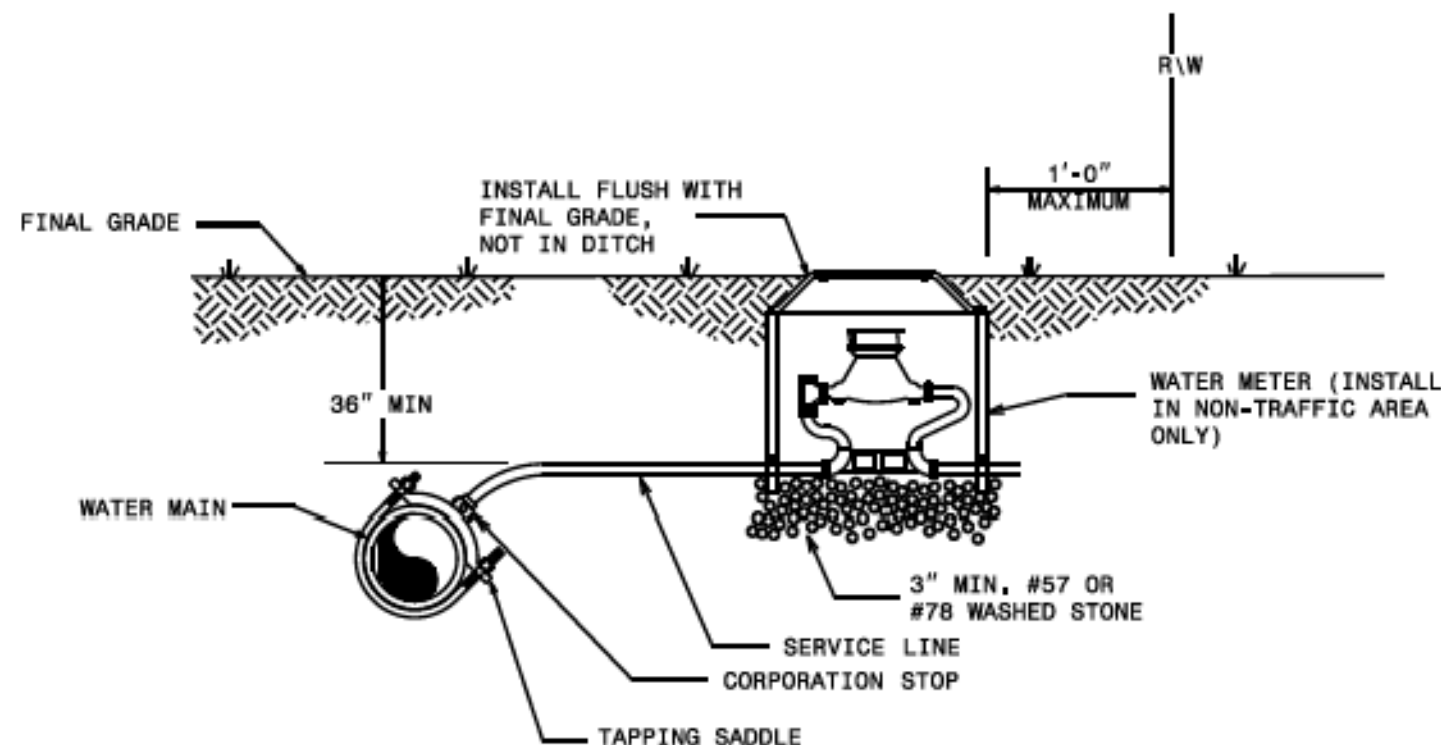
STATE	PROJECT NO.	SHEET NO.	TOTAL SHEETS
N.C.	43957	UC-2	
F.A. PROJECT NO.			

STATE OF NORTH CAROLINA
DEPT. OF TRANSPORTATION
DIVISION OF HIGHWAYS
RALEIGH, N.C.

ENGLISH STANDARD DRAWING FOR

WATER METER

SHEET 1 OF 1
1515.01



NOTES:

1. THIS DETAIL SHOWS THE TYPICAL FINAL WATER METER CONFIGURATION AFTER INSTALLATION OF A PROPOSED WATER METER, RECONNECTION OF AN EXISTING WATER METER, OR RELOCATION OF A WATER METER.

STATE OF NORTH CAROLINA
DEPT. OF TRANSPORTATION
DIVISION OF HIGHWAYS
RALEIGH, N.C.

ENGLISH STANDARD DRAWING FOR

WATER METER

SHEET 1 OF 1
1515.01

NC16 AND MT HOLLY-HUNTERVILLE RD. (SR-2004)
ROADWAY IMPROVEMENTS IN
MECKLENBURG COUNTY

SCALE	-NA-
DATE	1-03-14
DWG. BY	TWB
DESIGN BY	TWB
APPROVED	RWB



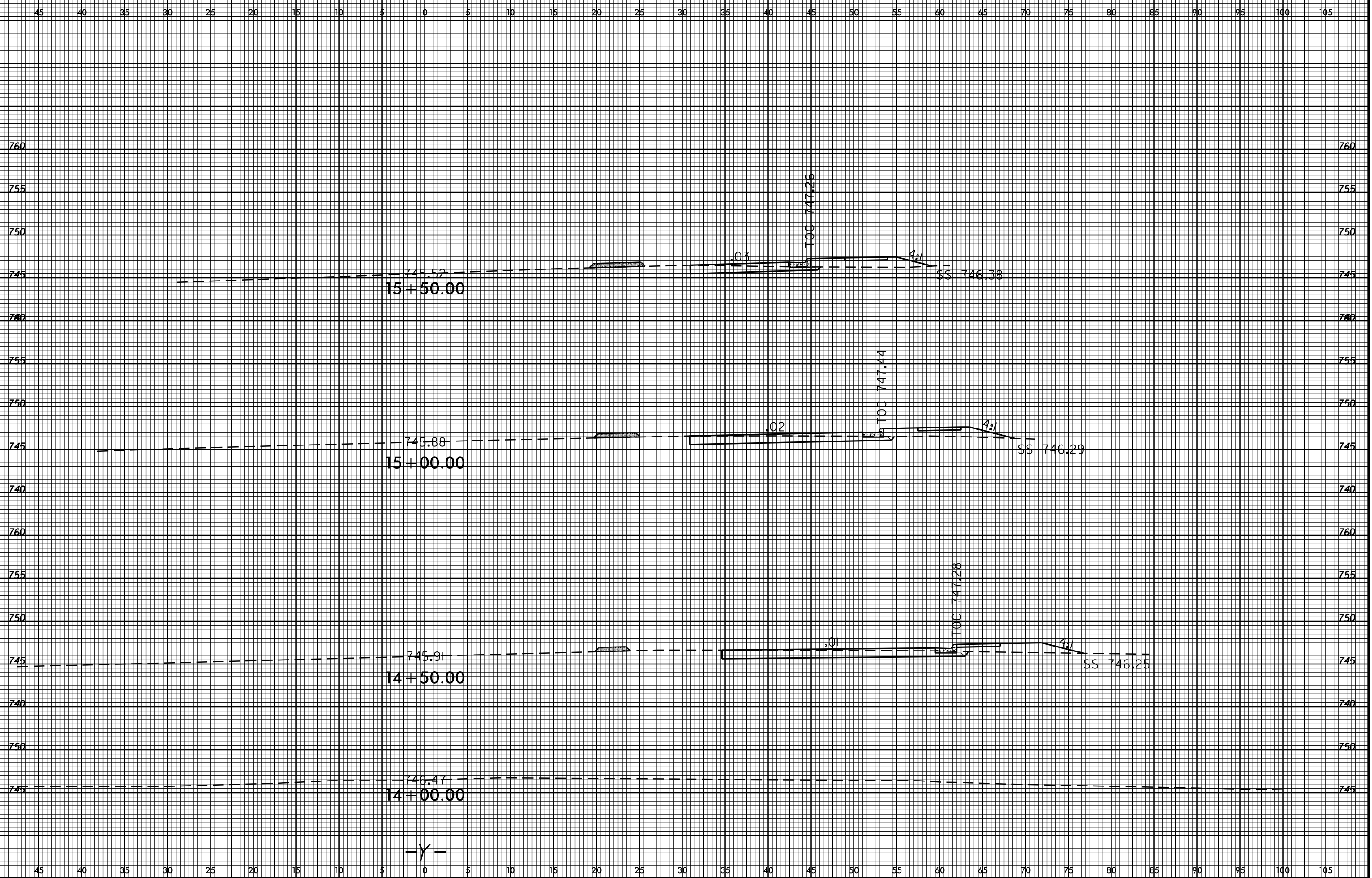
REVISIONS	

8/23/99



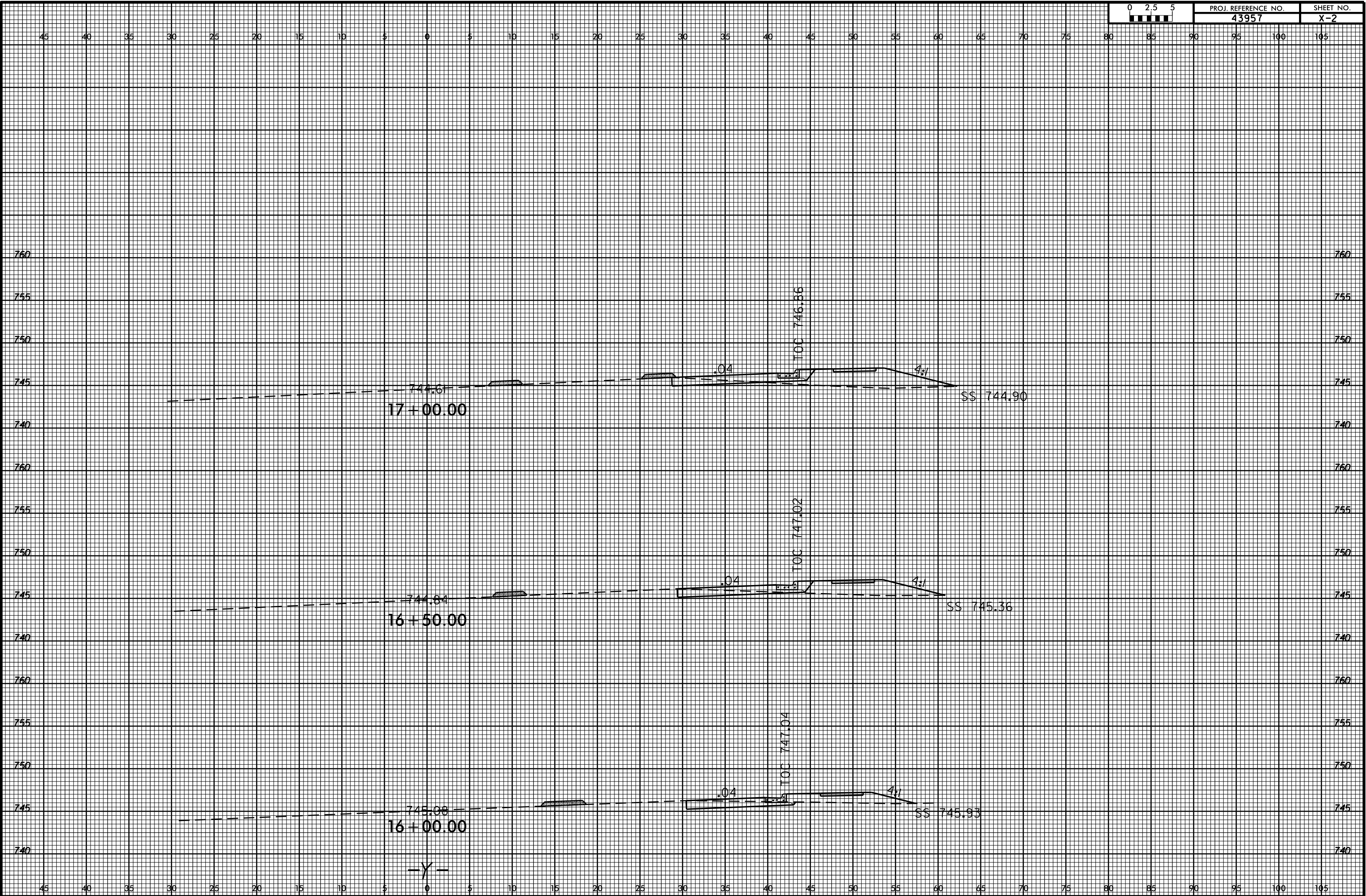
PROJ. REFERENCE NO.
43957

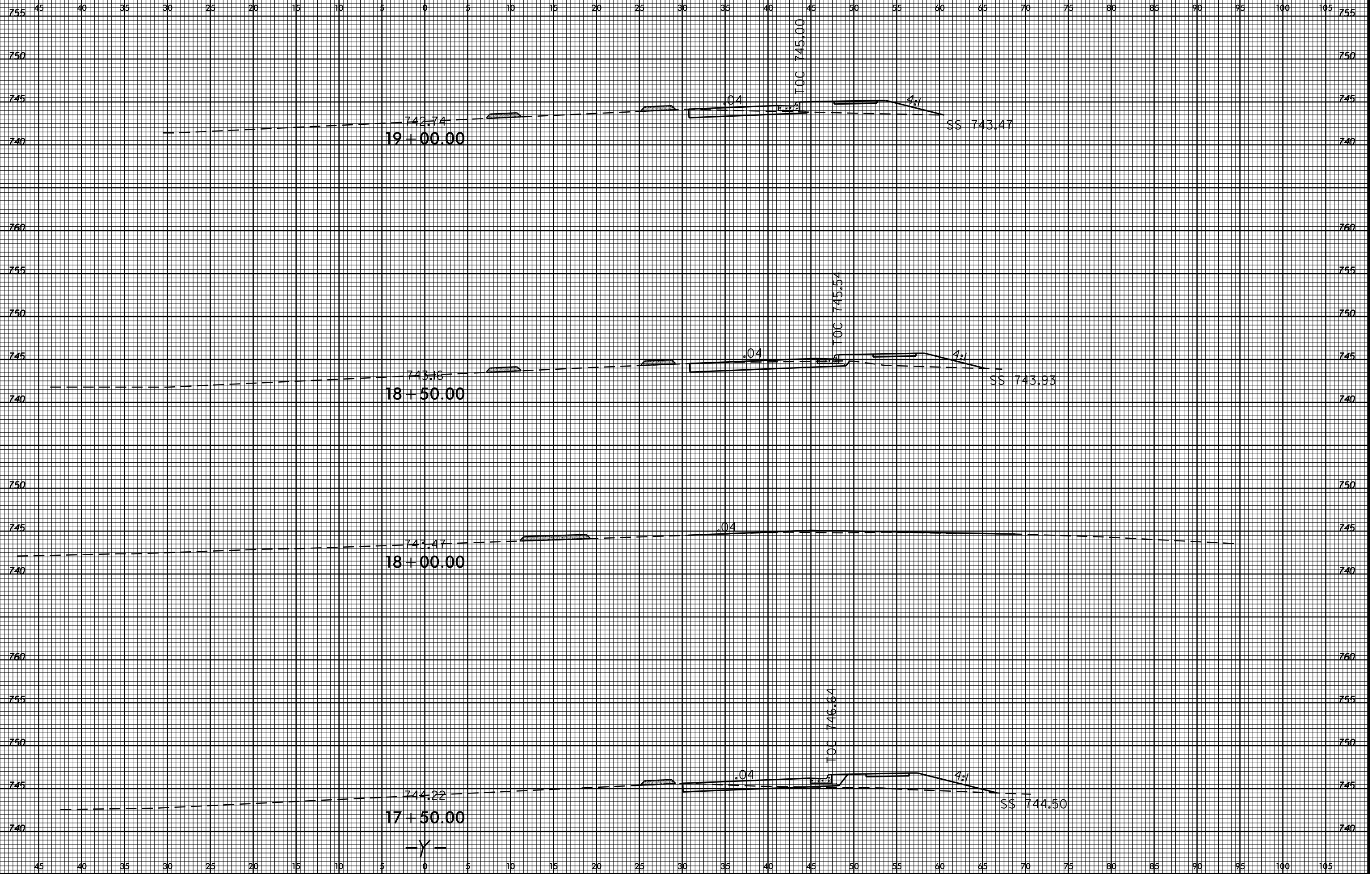
SHEET NO.
X-1



I:\JUN-2015 09h\ S:\DDC\RDY\Wack\Lenburg, NC_16_Mt_Holly-Huntersville\esc\mt_holly_m07_X_.xpl.dgn
idharward AT D:\DDC\IVCAD\277126

-Y-



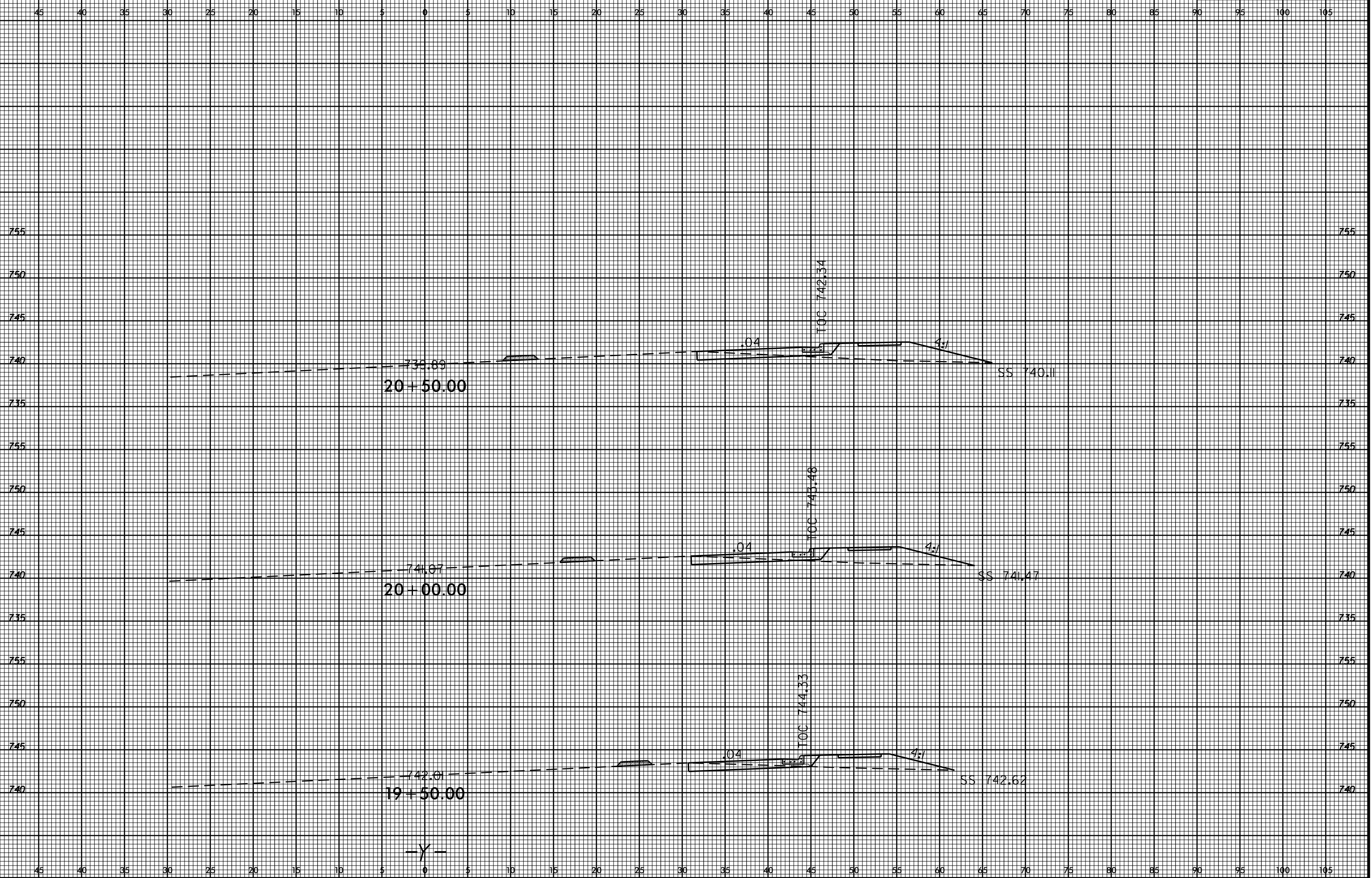


8/23/99



PROJ. REFERENCE NO.
43957

SHEET NO.
X-4



I:\JUN-2015\0945\1661\1661.dwg
 S:\DOC\ROY\Wack\1661\1661.dwg
 1661.dwg
 At 01001VCA0277126

